

NOTICE OF REGULAR BOARD MEETING OF THE GUAM HOUSING AND URBAN RENEWAL AUTHORITY

The Guam Housing and Urban Renewal Authority (“GHURA”) will hold its Regular Meeting of the GHURA Board of Commissioners on Friday, September 10, 2021 at 12:00 PM. This meeting is open to the public via Zoom.

Join Zoom Meeting

<https://us06web.zoom.us/j/82298866083?pwd=YnJuWi95SVJwVnpLTFh1anB0WlprZz09>

Meeting ID: 822 9886 6083

Passcode: 666973

The agenda may be viewed on our website at www.ghura.org.

For more information, please contact Audrey Aguon at 475-1378 and for special accommodations, please contact Katherine Taitano at 475-1322 or TTY 472-3701.



**BOARD OF COMMISSIONERS
REGULAR SCHEDULED MEETING
12:00 P.M., September 10, 2021
GHURA's Main Office (via Zoom)
1st floor, Conference Room, Sinajana
AGENDA**

- I. ROLL CALL**
- II. BOARD MEETING PUBLIC ANNOUNCEMENTS**
1st Printing –Thursday, September 02, 2021
2nd Printing – Wednesday, September 08, 2021
- III. APPROVAL OF PREVIOUS BOARD MINUTES – August 27, 2021**
- IV. NEW BUSINESS**
- | | PAGE (S) |
|---|-----------------|
| 1. Intent of Award | 1 - 26 |
| IFB#GHURA-COCC-021-007; New Vehicles | |
| 2. Intent of Award | 27 - 28 |
| IFB#GHURA-COCC-021-008; Trash and Cardboard Collection Services | |
- V. CORRESPONDENCE AND REPORTS**
1. A/E Manager's Update
- VI. GENERAL DISCUSSION / ANNOUNCEMENTS**
1. Next proposed scheduled Board Meeting: Friday, September 17th
@ 12:00 p.m.
- VII. ADJOURNMENT**

CLASSIFIEDS

Place an ad **online** TODAY!
 PDN Lobby Hours: **Monday-Friday 8am-5pm**
 Guampdn.com/Classifieds
 Or call (671)472-1PDN (1736)



Jobs
 Find a new job or career

Homes & Rentals
 Discover your new home

Auto
 Turn here for your next vehicle

Stuff
 Household, Furniture, Pets & Stuff

RENTALS
GOOD: 3 Lines, 3 Consecutive Days.....\$78.00
BETTER: 3 Lines, 7 Consecutive Days.....\$99.00
BEST: 3 Lines, 10 Consecutive Days.....\$115.00

ROOMMATES
Conditions/Restrictions: *Roommate a person who shares a room or apartment with another or others.
GOOD: 3 Lines, 7 Consecutive Days.....\$57.00
BETTER: 3 Lines, 10 Consecutive Days.....\$73.00

AUTOMOTIVE PACKAGES
 • Automotive • Trucks • Bikes • Boats • Motorcycles
Conditions/Restrictions: One vehicle per ad
Ad format: Make, Model, Year.
GOOD: 3 Lines, 7 Consecutive Days.....\$58.00
BETTER: 3 Lines, 10 Consecutive Days.....\$68.50
BEST: 4 Lines, 14 Consecutive Days.....\$79.00

SUPER DEALS
Personal Items below \$500 in total value
GOOD: 3 Lines, 7 Consecutive Days.....\$24.50
BETTER: 3 Lines, 10 Consecutive Days.....\$33.00
BEST: 3 Lines, 14 Consecutive Days.....\$40.00
 *Price must be included in the ad to qualify.

PRIVATE PARTY PLEASERS
Personal Items below \$2,500 in total value
GOOD: 3 Lines, 7 Consecutive Days.....\$33.00
BETTER: 3 Lines, 10 Consecutive Days.....\$43.50
BEST: 3 Lines, 14 Consecutive Days.....\$54.00
 *Price must be included in the ad to qualify.

Personal Items below \$2,501 in total value
GOOD: 3 Lines, 7 Consecutive Days.....\$59.00
BETTER: 3 Lines, 10 Consecutive Days.....\$70.00
BEST: 3 Lines, 14 Consecutive Days.....\$80.00
 *Price must be included in the ad to qualify.

GARAGE SALE
 • Fundraising • Rummage • Yard Sale
Conditions/Restrictions: 3 Consecutive Days
Ad format: Village, Date, Time
Garage Sale: Private residence
Rummage: School or Non-profit organization
GOOD: 3 Lines, 3 Consecutive Days.....\$24.50
BETTER: 3 Lines, 7 Consecutive Days.....\$33.00

PETS
GOOD: 3 Lines, 3 Consecutive Days.....\$24.50
BETTER: 3 Lines, 10 Consecutive Days.....\$33.00
BEST: 3 Lines, 14 Days.....\$40.00

EFFECTIVE 12/28/15
 All classified ads are subject to the applicable rate card, copies of which are available from our Advertising Dept. All ads are subject to approval before publication. The Pacific Daily News/Pacific Sunday News reserves the right to edit, refuse, reject, classify or cancel any ad at any time. Errors must be reported in the first day of publication. The Pacific Daily News/Pacific Sunday News shall not be liable for any loss or expense that results from an error in or omission of an advertisement. No refunds for early cancellation of order.

Wanted to Buy
 Are you in Financial Trouble?
 Need FAST CASH? I buy on/off island houses, lot, condos. I take over payments. Up to 200k. 649-4663

LET THE PACIFIC DAILY NEWS CLASSIFIEDS WORK FOR YOU!
 Pacific Daily News
 Call **472-1PDN**
 For More Information

IN THE SUPERIOR COURT OF GUAM
IN THE MATTER OF THE ESTATE OF ENRIQUETA EUSTAQUIO BELDAD, Decedent.
Superior Court Case No. PR0153-21
NOTICE OF HEARING
THIS NOTICE IS REQUIRED BY LAW. YOU ARE NOT REQUIRED TO APPEAR IN COURT UNLESS YOU DESIRE.

1. NOTICE IS HEREBY GIVEN that Melvin Eustaquio Beldad has filed a petition for: Petition for Probate of Will and for Letters of Administration with Will Annexed.
 2. A hearing on the petition will be heard by online remote appearance on Wednesday, September 15, 2021, at 9:40 a.m.
 3. To attend or to participate in the hearing, go to <https://guamcourts.org.zoom.us> and enter Meeting ID: 864 4387 2213; Passcode: JEMI.
 4. You may also call in for the hearing; you can call into the courtroom at 671-300-6703 at the designated hearing time. For connectivity issues, you may also contact Kristina Blaz at 475-3250 or by email at kblaz@guamcourts.org.
 Dated: 24 AUG 21
DANIELLE T. ROSETE
 Clerk of Court
 /s/ Serena T. Hernandez
 Courtroom/Chamber Clerk

PUBLICATION NOTICE

In accordance with the provisions of Guam Code Annotated, Title XI, Chapter III, Section 3315, notice is hereby given that: Y.C. ENTERPRISE, INC. DBA: AUDRI'S LOUNGE has applied for a Class: 4 (Relocation) General On Sale Alcoholic Beverage License said premises being marked as Lot: 51-2-1-4-NEW-1-1-R1, 560 Pale San Vitores Rd.(Relocation), Tamuning/Tumon/Harmon.
 /s/ William Frady
 Applicant's Signature

NOTICE OF REGULAR BOARD MEETING OF THE GUAM HOUSING AND URBAN RENEWAL AUTHORITY

The Guam Housing and Urban Renewal Authority ("GHURA") will hold its Regular Meeting of the GHURA Board of Commissioners on Friday, September 10, 2021 at 12:00 PM. This meeting is open to the public via Zoom.

Join Zoom Meeting
<https://us06web.zoom.us/j/82298866083?pwd=YnJuWi95SVJwVnpLTfh1anB0WlprZz09>
Meeting ID: 822 9886 6083 Passcode: 666973
 The agenda may be viewed on our website at www.ghura.org.

For more information, please contact Audrey Aguon at 475-1378 and for special accommodations, please contact Katherine Taitano at 475-1322 or TTY 472-3701.

CIVIL SERVICE COMMISSION NOTICE OF MEETING

Kumision I Setbision Sibit

Zoom Meeting at 9:00 a.m., Tuesday, September 7, 2021, Bell Tower, 710 W. Marine Corps Dr., Anigua. For special accommodations, call Eric Miller/ADA Coordinator at 647-1855.

Zoom Meeting:
<https://us06web.zoom.us/j/89374489278?pwd=TXVWSnUraUUwSEU1ZGorOVc1NINVTQT09>

Meeting ID: 893 7448 9278
Passcode: 851202

AGENDA:
 I. APPROVAL OF MINUTES: None.
 II. NEW BUSINESS: (1) Motion Hrg: J. Lubasan vs. DYA; CSC 20-AA11D (2) Motion Hrg: J.V.C. Cruz, II vs. DOC; CSC 21-AA03T (3) Motion Hrg: J. Arceo vs. PAG; CSC 21-AA09D (4) Motion Hrg: T.P. Nangauta vs. GWA; CSC21-AA11S and 21-AA16T;
 III. OLD BUSINESS: (1) Judgment of Dismissal: K. Shimabukuro vs. GMH; CSC18-WB02
 IV. GENERAL BUSINESS: None.
 V. ADJOURNMENT

Online Classifieds
 at GuamPDN.com
 To place your ads, please:

1. Log onto GuamPDN.com
2. Click on "Place an ad" under the Quick Links on the left blue side bar
3. Click on "Start Creating Your Ad Now"
4. Complete the form and Make Payment



CLASSIFIEDS

Place an ad **online** TODAY!
 PDN Lobby Hours: **Monday-Friday 8am-5pm**
 Guampdn.com/Classifieds
 Or call (671)472-1PDN (1736)



Jobs
 Find a new job or career

Homes & Rentals
 Discover your new home

Auto
 Turn here for your next vehicle

Stuff
 Household, Furniture, Pets & Stuff

RENTALS
GOOD: 3 Lines, 3 Consecutive Days.....\$78.00
BETTER: 3 Lines, 7 Consecutive Days.....\$99.00
BEST: 3 Lines, 10 Consecutive Days.....\$115.00

ROOMMATES
Conditions/Restrictions: *Roommate a person who shares a room or apartment with another or others.
GOOD: 3 Lines, 7 Consecutive Days.....\$57.00
BETTER: 3 Lines, 10 Consecutive Days.....\$73.00

AUTOMOTIVE PACKAGES
 • Automotive • Trucks • Bikes • Boats • Motorcycles
Conditions/Restrictions: One vehicle per ad
Ad format: Make, Model, Year.
GOOD: 3 Lines, 7 Consecutive Days.....\$58.00
BETTER: 3 Lines, 10 Consecutive Days.....\$68.50
BEST: 4 Lines, 14 Consecutive Days.....\$79.00

SUPER DEALS
Personal Items below \$500 in total value
GOOD: 3 Lines, 7 Consecutive Days.....\$24.50
BETTER: 3 Lines, 10 Consecutive Days.....\$33.00
BEST: 3 Lines, 14 Consecutive Days.....\$40.00
 *Price must be included in the ad to qualify.

PRIVATE PARTY PLEASERS
Personal Items below \$2,500 in total value
GOOD: 3 Lines, 7 Consecutive Days.....\$33.00
BETTER: 3 Lines, 10 Consecutive Days.....\$43.50
BEST: 3 Lines, 14 Consecutive Days.....\$54.00
 *Price must be included in the ad to qualify.

Personal Items below \$2,501 in total value
GOOD: 3 Lines, 7 Consecutive Days.....\$59.00
BETTER: 3 Lines, 10 Consecutive Days.....\$70.00
BEST: 3 Lines, 14 Consecutive Days.....\$80.00
 *Price must be included in the ad to qualify.

GARAGE SALE
 • Fundraising • Rummage • Yard Sale
Conditions/Restrictions: 3 Consecutive Days
Ad format: Village, Date, Time
Garage Sale: Private residence
Rummage: School or Non-profit organization
GOOD: 3 Lines, 3 Consecutive Days.....\$24.50
BETTER: 3 Lines, 7 Consecutive Days.....\$33.00

PETS
GOOD: 3 Lines, 3 Consecutive Days.....\$24.50
BETTER: 3 Lines, 10 Consecutive Days.....\$33.00
BEST: 3 Lines, 14 Days.....\$40.00

EFFECTIVE 12/28/15
 All classified ads are subject to the applicable rate card, copies of which are available from our Advertising Dept. All ads are subject to approval before publication. The Pacific Daily News/Pacific Sunday News reserves the right to edit, refuse, reject, classify or cancel any ad at any time. Errors must be reported in the first day of publication. The Pacific Daily News/Pacific Sunday News shall not be liable for any loss or expense that results from an error in or omission of an advertisement. No refunds for early cancellation of order.

For Rent Residential

RESIDENTIAL APARTMENT
 MAITE 3BR/BA
 NEW RENO INCL ALL APPL
 SEC 8 OK 4774239
 7881119

Wanted to Buy

Are you in Financial Trouble?
 Need FAST CASH? I buy on/off island houses, lot, condos. I take over payments. Up to 200k. 649-4663

Miscellaneous

DEATH BY A GUAM DOCTOR!!



Have you had a loved one die or injured and feel that it's the doctor, clinic or hospitals fault? Are you grieving, feel alone, need to talk?

I AM A GRIEVING FATHER, WHO KNOWS FIRST HAND YOUR SUFFERING AND PAIN WITH A SHOULDER FOR YOU TO LEAN ON AT NO COST. I DO THIS AS A WAY TO HONOR MY SON AND TO STAND TALL WITH YOU AND SHARE YOUR EXPERIENCES AND GRIEF. YOU ARE NOT ALONE.

David Lubofsky
 www.guamopinion.com
 Twitter: @dave_luby
 email: asher@asherdeanlubofsky.com

Place an ad in PDN CLASSIFIEDS! IT WORKS!

Let the Pacific Daily News Classifieds work for you!
472-1PDN to find out how

Jon A. Visosky, Esq. ROBERTS FOWLER & VISOSKY LLP
 865 South Marine Corps Drive, Suite 201
 Tamuning, Guam 96913
 Telephone: (671) 646-1222
 Facsimile: (671) 646-1223
 visosky@guamlawoffice.com
 nericsson@guamlawoffice.com

Attorneys for Petitioner Carolyn Chargualaf

IN THE SUPERIOR COURT OF GUAM

Estate of Frances D. Duenas, Decedent.

PROBATE CASE NO. PR0134-21

Notice To Creditors

Within sixty (60) calendar days of the first publication of this Notice, creditors of the Decedent above, and all persons having claims against the Estate or against Decedent, must either file their claims with the necessary supporting documents with the Clerk of the Superior Court of Guam, or present their claims to the Administrator or her attorneys, Roberts Fowler & Visosky LLP, 865 South Marine Corps Drive, Suite 201, Tamuning, Guam 96913.

Date: August 26, 2021

Roberts Fowler & Visosky LLP
 By: /s/ Jon A. Visosky
 Attorneys for Administrator Carolyn Chargualaf

NOTICE OF REGULAR BOARD MEETING OF THE GUAM HOUSING AND URBAN RENEWAL AUTHORITY

The Guam Housing and Urban Renewal Authority ("GHURA") will hold its Regular Meeting of the GHURA Board of Commissioners on Friday, September 10, 2021 at 12:00 PM. This meeting is open to the public via Zoom.

Join Zoom Meeting
<https://us06web.zoom.us/j/82298866083?pwd=YnJuWi95SVJwVnpLTfh1anBOWlprZz09>

Meeting ID: 822 9886 6083 Passcode: 666973

The agenda may be viewed on our website at www.ghura.org.

For more information, please contact Audrey Aguon at 475-1378 and for special accommodations, please contact Katherine Taitano at 475-1322 or TTY 472-3701.

PUBLIC NOTICE ANNOUNCEMENT

The Guam Visitors Bureau (GVB) will hold a regular meeting of the **Japan Marketing Committee** on **Tuesday, September 14, 2021 at 1:30 p.m.** in GVB's main conference room and online via GoToMeeting.

GoToMeeting link: <https://www.gotomeet.me/GUAMVISITORSBUREAU/jmc-meeting>

GVB will also hold a regular meeting of the **Korea Marketing Committee** on **Tuesday, September 14, 2021 at 3:30 p.m.** in GVB's main conference room and online via GoToMeeting.

GoToMeeting link: <https://www.gotomeet.me/GUAMVISITORSBUREAU/kmc-meeting>

Any individual requiring special accommodations are requested to contact GVB at 646-5278 for assistance.

This ad was paid for by the Tourist Attraction Fund.

VEHICLES FOR BID
 "AS IS"

2015 Nissan Rogue

Vehicles may be viewed at Bank of Guam Hagåtña Branch by appointment only, Monday through Friday, from 9am to 3pm. Last day for bidding will be on Friday, September 10, 2021 at 3pm. For more information contact Daniel Blas at 472-5343/689-9493 or Travis Meno at 472-5570/688-3930. The Bank reserves the right to refuse any or all bids.

P.O. Box BW
 Hagåtña, GU 96932
 (671) 472-5300
bankofguam.com

Bank of Guam
 Member FDIC



**BOARD OF COMMISSIONERS
REGULAR SCHEDULED MEETING
12:00 P.M., September 10, 2021
GHURA's Main Office (via Zoom Video Conference)
1st floor, Conference Room, Sinajana
BOC MEETING MINUTES**

I. CALL TO ORDER

After notice was duly given, pursuant to the Open Government Law of Guam and the Bylaws of the Authority, the Board of Commissioners' regularly scheduled board meeting was called to order at **12:00 P.M., Friday, September 10, 2021**, at the GHURA Sinajana Main Office, 1st floor Conference room, by Chairman Flores. He indicated that **6** members of the Board of Commissioners were present, representing a quorum and that the meeting would proceed as scheduled.

II. ROLL CALL

PRESENT: (VIA ZOOM VIDEO CONFERENCE)

Sabino Flores, **Chairman**
Monica Guzman, **Vice Chairwoman**
George Pereda, **Commissioner**
Frank Ishizaki, **Commissioner**
Anisia Delia, **Commissioner**
Karl E. Corpus, **Commissioner**

ABSENT:

LEGAL COUNSEL:
Anthony Perez, Esq.

MANAGEMENT & STAFF:

Ray Topasna, **Executive Director**
Elizabeth Napoli, **Deputy Director**
Audrey Aguon, **Special Assistant**
Katherine Taitano, **CPD/RP&E Manager**
Sonny Perez, **A/E Manager**
Greta Balmeo, **Buyer**

PUBLIC: (VIA ZOOM VIDEO CONFERENCE)

Vy-Thao Pierce, HUD
Rebecca Borja, HUD

III. BOARD MEETING PUBLIC ANNOUNCEMENTS

1st Printing – Thursday, September 02, 2021
2nd Printing – Wednesday, September 8, 2021

ACKNOWLEDGED dates of public announcement in the Guam PDN.

IV. APPROVAL OF PREVIOUS BOARD MINUTES

[118/21] Chairman Flores motioned to approve the meeting minutes of August 27, 2021 as corrected. The motion was seconded by Commissioner Delia. With no objections by the other board members, the motion was approved.

V. NEW BUSINESS

1. Intent of Award -IFB#GHURA-COCC-021-007; New Vehicles

[119/21] DISCUSSION

- There were no questions by the other board members.

[120/21] ACTION- Chairman Flores announced that the item would be pulled from the agenda.

2. Intent of Award- IFB#GHURA-COCC-021-008; Trash and Cardboard Collection Services

[121/21] DISCUSSION-Director Topasna stated the following:

- (2) companies submitted bids: Lagu Sanitation and Pacific Waste Control.
- This bid was divided into (2) separate packages:
 - 1.**Bid Item #1**- Pick up and disposal of trash collections at AMPs 1, 2, 3, 4, Guma Trankilidat, and Main office.
 - 2.**Bid Item #2**- pick up and disposal of card board collections at AMPs 1, 4, Guma Trankilidat, and the Main Office.
- Both vendors were found to be responsive and met the IFB specifications.
- Lagu Sanitation was ranked the lowest responsive and responsible bidder.
- Director Topasna requested that the board approve an award of contract in the amount of \$42, 672.00 to Lagu Sanitation.
- Contract term is for (3) years with the option to extend for (2) additional (1) year terms.

There were no further discussions.

[122/21] ACTION- Commissioner Delia motioned to approve the Intent of Award-IFB#GHURA-COCC-021-007, Trash and Carboard Collection Services to Lagu Sanitation in the amount of \$42,672.00. Commissioner Corpus seconded the motion. There were no objections by the other board members. The motioned passed.

VI. CORRESPONDENCE / REPORTS

1. [123/21] Mr. Sonny Perez, A/E Manager, updated the Board of Commissioners on the following projects:

- He stated that his presentation is available for review on the GHURA website.

CDBG PROJECTS:

- Sinajana Arts Center- Roof beam pour 3rd week, cure. Double tee installation to take place
- Resident Women's Treatment Center- Mobilize crew and assets 9/15/21
- Umatac/Sinajana Baseball field- work continues
- Inalajan Basketball Court- Clearing and grading
- MTM Community Center- specs ready for advertisement
- Sinajana Fire station- in A/E negotiations; Guma Architects to present to board at later date
- iLearn Academy- work continues
- Mr. Perez stated that progress pictures on the projects may be found on the GHURA website.

A/E PROJECTS:

- AMP RESERVES- Budget approved; A/E to review projects and schedules.
- Solar PPA @ Guma' Trankilidât- Contract under legal review.
- Repositioning- under A/E planning
- Mosquito Lab- Possible legal matters; pieces of equipment inoperable and fire suppression system not functional. Working with GHURA's attorney, AG's office and the bonding company to bring Mosquito to Bio-level 2 or 3 Standards. January 2022.

CHALLENGES:

2020-

- COVID-19 and Military Build-up
- Fully Operational only 51 days
- PCOR1 operating at 25% capacity limited to 194 days
- PCOR2 operating at 50% capacity limited to 71 days
- September/November Full construction shutdown

2021-

- COVID-19 and Military Build-up
- PCOR1 operating at 25% Capacity limit to 18
- PCOR2 operating at 50% capacity limit to 34
- Fully operational with social distancing 191 days
- Locating quality contractors outside the fence
- **RECOMMENDATION TO EXPLORE-** for GHURA projects to have NDAA designation to have H2B workers

CAMP BLAZ PROJECTS:

- \$919M worth of projects
- Contracts already awarded to companies up to 2026- Build-up has progressed

Commissioner Ishizaki asked about receiving a summary briefing on the Mosquito Lab. Mr. Perez stated that a report will be made available to the board members.

Vice Chairwoman Guzman asked if GHURA had any involvement in the Bio-Safety Lab that was announced a few days ago which is \$32M. Director Topasna stated that GHURA is a part of the Coordination Team to build the Medical Plaza, which includes the hospital, Behavioral Health and Public Health. A part of the plaza is the Public Health Lab, which may have been approved this month. GHURA had expressed its desire to assist on the technical side due to Mr. Sonny Perez's extensive experience in Mechanical Engineering and his Certification in HVAC Commissioning. These are critical in the building of the Public Health Lab. However, the Office of Economic Adjustment included certain specifications to the project and wanted an engineering firm with that type of expertise. Due to GHURA's experience with the Mosquito Lab, we have offered to participate in reviewing the plans and have shared our concerns with the team. He stated that GHURA is providing technical assistance, but may not necessarily oversee the project.

Vice Chairwoman Guzman asked Mr. Sonny Perez if the inclement weather that Guam is currently experiencing will delay the roof pouring of the Sinajana Arts Center. Mr. Sonny Perez explained that to keep on schedule, the cement mixture strategy during inclement weather is used. This strategy includes using a drier concrete mix so when the mixture is poured, additional water from rainfall is accommodated. Otherwise, pouring of the concrete is postponed until the rain stops.

Chairman Flores stated that Mr. Sonny Perez mentioned that the roof of the Arts Center is based on a double-tee type of construction. Mr. Perez confirmed this. Chairman Flores asked if the contractor for the double-tee installation was Rock Mountain. Mr. Perez confirmed this. Chairman Flores stated that double tees serve as a roof structure resting on beams.

Vice Chairwoman Guzman asked about the requirements of NDAA Designation. Mr. Sonny Perez stated that he will have to do the research on the requirements. Ms. Katherine Taitano recalled that the Cultural Respository was intended to be funded by them and that is why they may have been able to gain a waiver. Vice Chairwoman Guzman added that the Cultural Respository was funded by DoD and is why it was granted the NDAA designation. She added that some road construction projects funded by DoD were also given NDAA Designation. Chairman Flores added that Tsubaki Towers were also given the NDAA designation and were able to get H2Bs approved. Vice Chairwoman added that the Governor stated that everything that happens on Guam impacts the build-up and based on that, believes that GHURA's chance of receiving the NDAA designation should be relatively simple.

Mr. Perez added that GHURA is exploring alternative technologies as long as the structural engineer signs off so that the median is at the low to moderate housing costs.

VII. GENERAL DISCUSSIONS / ANNOUNCEMENTS

[124/21] Vice Chairwoman Guzman inquired about the health and safety of GHURA's staff during these difficult times. Deputy Director Napoli stated that GHURA has to report on its vaccination status to Adelup on a weekly basis. Discussions on creating designated weekly testing sites for Government of Guam employees who are unvaccinated are ongoing. She added that as of September 9, 2021, 80.4% of GHURA employees were vaccinated. HR is working diligently to track those vaccinated as well as those who are unvaccinated. Mitigation measures are also in place. Everyone is being diligent and being safe.

Commissioner Corpus added that at the Guam Medical Plaza, free COVID testing is done daily and to everyone, vaccinated or not. He encouraged everyone to share the information.

Vice Chairwoman Guzman asked Deputy Director Napoli to keep the board posted on the staff's status and to give them the board's best.

There were no further discussions.

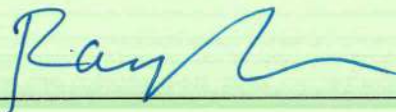
1. [125/21] Next proposed board meeting Date: Friday, Sept. 17, 2021 at 12PM

Unable to attend: Commissioner Delia

VIII. ADJOURNMENT

[126/21] With no further discussions, Vice Chairwoman Guzman motioned to adjourn the meeting. Commissioner Ishizaki seconded the motion. There were no objections by the other board members. The motion passed and meeting was adjourned at 12:47PM, Sept. 10, 2021.

SEAL



RAY S. TOPASNA
Board Secretary / Executive Director

**GUAM HOUSING AND URBAN RENEWAL AUTHORITY
ATURIDAT GINIMA YAN RINUEBAN SIUDAT**

MEMORANDUM

TO: Board of Commissioners

FROM: Ray Topasna, Executive Director



**SUBJECT: Intent of Award for IFB#GHURA-COCC-021-007
New Vehicles – (12) New Pick-up Trucks**

GHURA issued an Invitation for Bid for a service contract for the Lease of All-in-One Copier/Fax/Scan/Print Machines on July 16, 2021. A total of 3 vendors had expressed their interest in the bid. The IFB closed on August 31, 2021 and 2 of the 3 companies had submitted bids. Below are the results of the bid submissions:

Bidder	Bid Item #1	Bid Item #2	Total
Atkins Kroll	\$251,909.00	\$146,000.00	\$397,909.00
Triple J Enterprises, Inc.	\$271,880.00	\$186,250.00	\$458,130.00
Monster Corp. dba Autospot	\$265,965.00	\$154,975.00	\$420,940.00

Bid Item #1: (7) Pick-up Trucks – Extended Cab, 4WD/AWD

- AMP 1 – 1 truck
- AMP 3 – 1 truck
- AMP 4 – 4 trucks
- Guma Trankilidat – 1 trucks

Bid Item #2: (5) Pick-up Trucks – Extended Cab, 2WD/4WD

- Section 8 – 4 trucks
- COCC (ROSS) – 1 truck

Upon Procurement staff's review of the bid submissions, Triple J Enterprises, Inc.'s bid was rejected due to the non-payment of the \$50.00 bid registration fee. Atkins Kroll was found to be the most responsive, lowest price bidder and met all the bid specifications. GHURA is requesting for the Board of Commissioners approval for an award to Atkins Kroll as the lowest, responsive, responsible bidder for a total amount of Three Hundred Ninety-Seven Thousand Nine Hundred Nine dollars and Zero Cents (\$397,909.00).

Attachment: Bid Tabulation
Vehicle specification brochure

Ray S. Topasna, Executive Director

New Vehicles - 12 Pick-Up Trucks

Bid due date: August 31, 2021

Bid due time: 2:00 PM

Package no.	1	2	3	4
Name of Bidder	ATKINS KROLL	TRIPLE J ENT. INC.	AUTO SPOT	
Base Bid item 1	\$251,909.00	\$271,880.00	\$265,965.00	
Base Bid item 2	\$146,000.00	\$186,250.00	\$154,975.00	
Bid Bond 15%	\$59,686.35	15%	\$63,141.00	
Bonding Company	BOH	DV INS. CO.	BOG	
Current Business License	✓	✓	✓	
AG Form 2, 3, 4, 5, 7	✓	✓	✓	
HUD Form 5369-C	✓	✓	✓	
Disclosure of Organizational COI Affidavit	✓	✓	✓	
Contact for Contract Administration	✓	✓	✓	
Brochures & Descriptive Literature	✓	✓	✓	
Addendum 1	✓	✓	✓	
Addendum 2	✓	✓	✓	
Addendum 3	✓	✓	✓	

ATTESTED BY:

[Signature]

Date:

8/31/2021

[Signature]

8/31/2021



TOYOTA

2021 Tacoma

2021 TACOMA

Epic made possible.

The 2021 Tacoma makes your off-road, off-grid adventures possible.¹ Built from the same tough material that's made Toyota trucks legendary, Tacoma brings capability, tech and confidence to your outdoor adventures. So gear up, get in and get ready to start your next epic adventure.



Limited shown in Silver Sky Metallic.



See numbered footnotes in Disclosures section.

PERFORMANCE

The power to rule any terrain.

Life is more epic with Tacoma. Equipped with an available 3.5-liter V6, which includes a standard Tow Package, Tacoma can tow up to 6800 lbs.² And the 4-/7-pin connector sits cleanly inside the three-piece bumper, helping you haul your gear out without hitting any snags.

Available 6-speed transmission

If rowing through the gears is more your style, Tacoma offers a 6-speed manual transmission, on certain models, to put control firmly in your hands.

6800-lb. towing capacity

Whatever toys you've got, Tacoma's got the power to bring 'em along. Its powerful V6 and available Tow Package help it tow up to 6800 lbs.² or carry a payload of up to 1685 lbs.³

Trailer-Sway Control

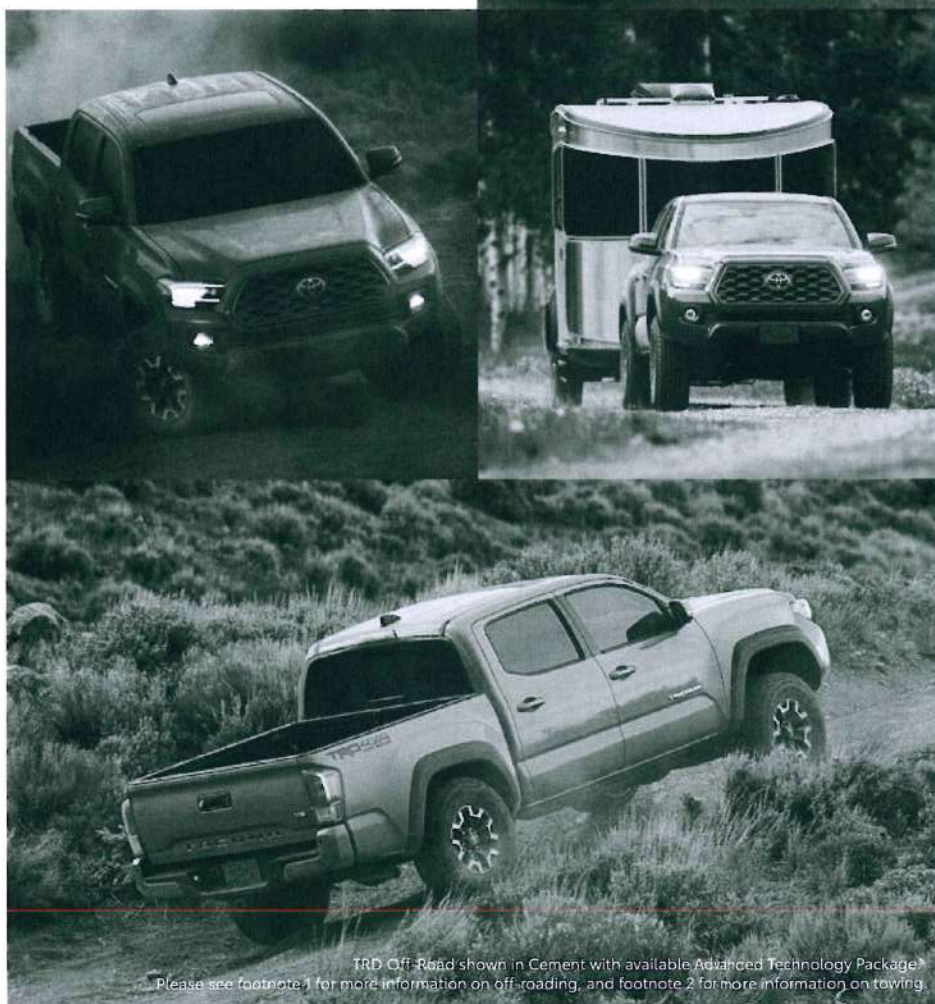
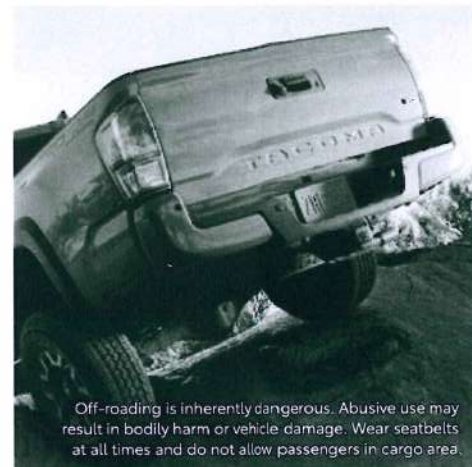
Included with Tacoma's available Tow Package, Trailer-Sway Control (TSC)⁴ applies brake pressure at individual wheels and manages engine torque to help maintain control of the trailer.

Part-time 4WD

Choose the drivetrain mode best suited for your adventure of the day. With part-time 4WD, you can easily activate 4WD capabilities with a simple turn of a knob.

3.5-liter V6 direct-injection engine

Tacoma's available Atkinson-cycle 3.5-liter V6 with direct injection is the perfect blend of efficiency and power, giving you more of everything you want.



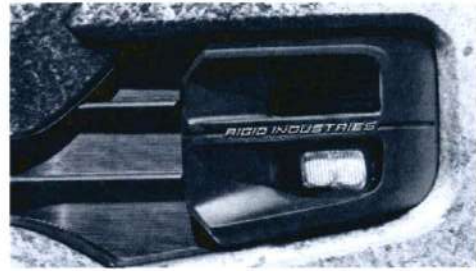


TRD Pro shown in Lunar Rock.

TRD PRO

Leave limits in the dust.

Designed by the experts at Toyota Racing Development (TRD), the 2021 Tacoma TRD Pro is built to take on the world's gnarliest terrain. The stuff you want — like an aggressive front fascia, a TRD cat-back exhaust and 16-in. TRD Pro black alloy wheels — all comes standard. Things are about to get a lot more epic.



Rigid Industries® LED fog lights

Designed for an OEM-perfect fit, these Rigid Industries® LED fog lights pack a lot of brightness into a compact package. Rugged construction and a 35-degree wide-angle beam pattern help ensure you have light when, and where, you need it.



TRD-tuned FOX®⁷ Internal Bypass shocks

For ultimate performance and control, these shocks feature 2.5-in. aluminum housings; hardened, oversize shafts; and remote reservoirs in the rear. Designed to help provide more ground clearance, maximum damping and fade-free performance, the suspension helps smooth out the rough stuff.



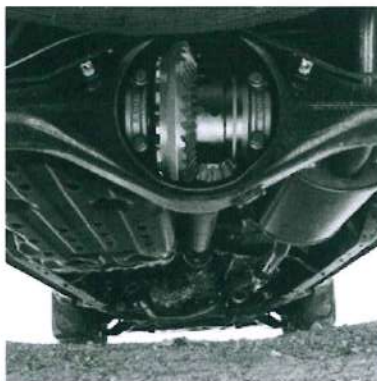
TRD Pro skid plate

A unique TRD Pro skid plate comes standard on Tacoma TRD Pro. Constructed from 1/4-in.-thick aluminum, this piece of armor helps protect crucial mechanical components underneath the front end, so you can even go beyond points on the map.

CAPABILITY

Obstacles don't stand a chance.

This is where the rubber meets the dirt. With available equipment like an electronically controlled locking rear differential, Crawl Control (CRAWL)⁸ and a Multi-Terrain Monitor (MTM),⁹ Tacoma is ready to take on tough terrain.



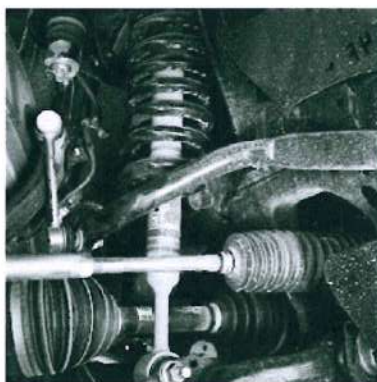
Electronically locking rear differential

Tacoma TRD Off-Road's standard electronically controlled locking rear differential distributes engine power evenly to both rear wheels so they move at the same speed, providing more grip in low-traction conditions.



Crawl Control

When the trail gets challenging, Tacoma TRD Off-Road's Crawl Control (CRAWL)⁸ is here to help you conquer your off-road adventure. This advanced system automatically modulates the throttle and brakes on five low-speed settings so you can keep your focus on navigating across difficult terrain.



Bilstein® shocks

Available Bilstein®¹⁰ shocks know how to keep their cool under pressure, delivering consistent performance when the going gets rough. Standard on TRD Off-Road, these shocks help soak up the impacts of the trail, thanks to high-performance components and valving tuned specifically for off-road driving.¹



See footnote 1 for more information on off-roading.

Multi-Terrain Select

Tacoma TRD Off-Road features Multi-Terrain Select (MTS). With five modes to choose from, this system helps regulate wheelspin by automatically adjusting the engine throttle and traction control. When combined with standard Goodyear®¹¹ Wrangler®¹² tires with tough Kevlar®¹³ construction, Multi-Terrain Select helps improve traction dramatically.



Hill Start Assist Control

Tacoma's Hill Start Assist Control (HAC)¹⁴ is designed to help you safely get up those hills. This technology helps minimize Tacoma from rolling backward when you move your foot from the brake to the gas pedal, so you can move upward with confidence. (HAC not available on TRD Off-Road 4WD M/T.)



UTILITY

Carry your boards, bikes and sense of adventure.

Bikes. Boards. You name it. Tacoma's standard composite bed surface is built to withstand your rough-and-tumble adventure. Its integrated heavy-duty deck rail system makes it easy to tie down gear of all sizes. Now, when action calls, you'll be ready to go.

Trail Special Edition

Black badging, unique dark gray 16-in. TRD Off-Road wheels and lockable bed storage boxes highlight the adventurous spirit of Tacoma Trail Special Edition. The driver's-side storage box even includes insulation inside, while Black fabric seats with unique tan stitching raise the bar on each drive.

Composite bed with 120V outlet

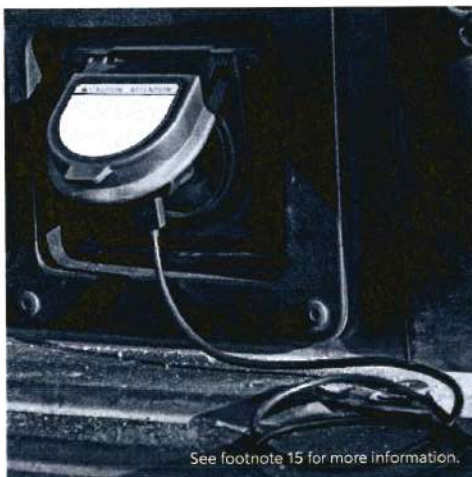
Tacoma's bed is composed of an ultra-durable, fiber-reinforced Sheet-Molded Composite (SMC) surface that boasts a greater impact strength than steel, while an available bed-mounted 120V/400W outlet¹⁵ helps keep the action powered up.

Deck rail system

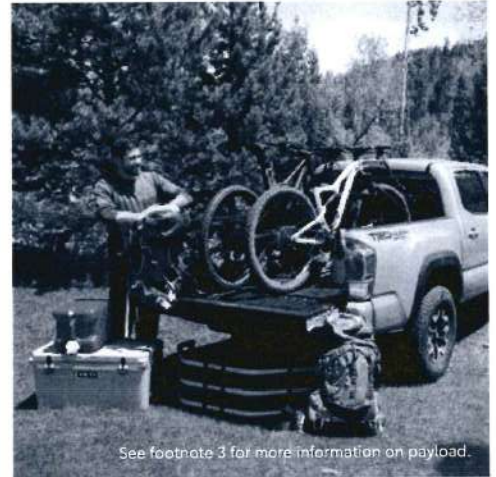
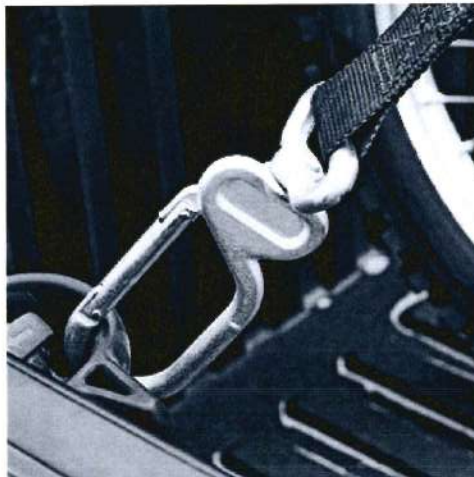
Tacoma's bed comes standard with an innovative deck rail system. With four heavy-duty adjustable tie-down cleats, you've got the strength and adjustability you need to keep your cargo securely strapped down.

Smart storage

With various hidden, locking storage areas, Tacoma keeps your gear out of the way, out of sight and ready for your next outing.



See footnote 15 for more information.



See footnote 3 for more information on payload.

See numbered footnotes in Disclosures section.

Raising the bar. Again.

Whether freshly waxed or coated in dust, Tacoma's good looks impress from every angle. But while it may be tough on the outside, Tacoma is all about comfort and convenience on the inside, with features like a Qi-compatible wireless charging pad:⁶



Nightshade Special Edition

Cruise down the street in the new Nightshade Special Edition and show off Tacoma's dark side. Blacked-out exterior trim, dark smoke 18-in. alloy wheels, exhaust tip and exclusive grille — all add a little more mystery to your adventures.



LED headlights

Tacoma's available LED headlights use LED elements for both the low and high beams, giving you bright, efficient light when you need it. And since they're bolted to the front of Tacoma, you can bet that they look awesome too.



Embossed tailgate

Let everyone behind you know who's in charge. The tailgate features an embossed Tacoma logo that complements the rugged look.



Dual zone automatic climate control

Standard on all V6 models, the dual zone automatic climate control brings more comfort while you're out on the trails. Adjust the cabin temperature to your and your passenger's preferences, and the system automatically adjusts the controls to get things just right.



Panoramic View Monitor

Get into and out of that campsite with ease. Tacoma's available Panoramic View Monitor (PVM)¹⁷ uses cameras on the front, sides and rear of the truck to give you a 360-degree view of what's going on outside.



10-way power-adjustable seat

Take comfort to new heights. Tacoma features an available 10-way power-adjustable driver's seat that includes 2-way lumbar support.

Amplify your drive.

Take advantage of smarter and convenient technologies designed to simplify your everyday life. From a suite of services that are there for you 24/7 to an immersive audio multimedia system, you can stay connected to your world.



Connected Services

Our available suite of Connected Services provides added convenience and peace of mind.¹⁸

- ✓ **Safety Connect®**
Emergency SOS assistance and 24/7 Toyota Roadside Assistance.^{19, 20}
- ✓ **Service Connect**
Get personalized maintenance updates and vehicle health reports.²¹
- ✓ **Remote Connect**
Start, lock/unlock your doors and more, using your compatible smart device.²²
- ✓ **Wi-Fi Connect**
Turn your Toyota into a hotspot with 4G connectivity.²³
- ✓ **Destination Assist**
24/7 live agent assistance to locate your next destination.²⁴

To view included trial details, please visit toyota.com/connected-services.

Audio Multimedia

Make every drive more personal. By utilizing your vehicle's touchscreen display and audio multimedia capabilities, you'll always have access to what you want. Whether it's listening to your favorite playlist or finding the most scenic route to your destination, you'll enjoy the latest in connectivity and technologies that are all about you.



Apple CarPlay®

Bring along a familiar face. With Apple CarPlay²⁵ compatibility, you can use your compatible iPhone²⁶ with the audio multimedia system to get directions, make calls, send and receive messages, and listen to music — all while staying focused on your commute.



Android Auto™

Stay connected on the road. By pairing your compatible Android^{TM27} phone with the audio multimedia system, Android Auto^{TM28} lets you access your Google Assistant, get real-time traffic alerts, make and receive phone calls, listen to your favorite soundtrack and more.



SiriusXM® All Access 3-month trial subscription

Enjoy listening to what you want to hear. With SiriusXM,²⁹ you get the deepest variety of ad-free music, more sports coverage than anywhere else, exclusive talk channels, every kind of comedy, and the most complete news coverage.³⁰



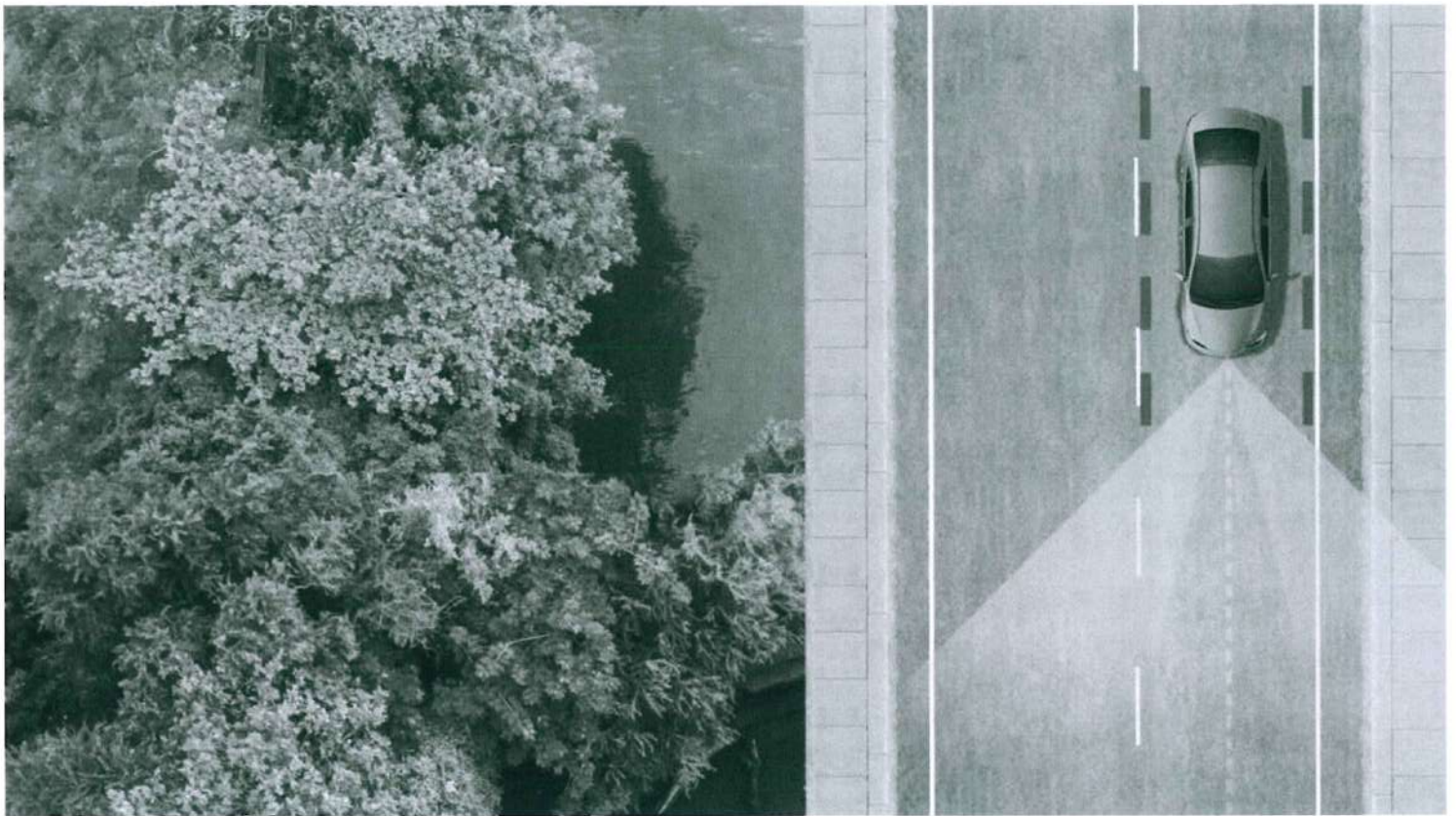
Amazon Alexa

Almost anywhere the road takes you, Amazon Alexa³¹ connectivity follows. With a smartphone connection and the Toyota+Alexa app, all you have to do is ask Alexa to play music, listen to audiobooks, hear the news, check weather, control smart-home devices and more.



JBL®

Feel the difference and hear the truth. Designed specifically for Toyota, JBL³² finely tunes each speaker to the interior of the vehicle. Just turn up the volume to hear the crisp, rich, vibrant sound come through.



TOYOTA SAFETY SENSE™ P (TSS-P)

Peace of mind comes standard.

Toyota Safety Sense™ P (TSS-P)³³ is a bundle of active safety features included on many new Toyota vehicles at no additional cost. TSS-P's comprehensive features create in-the-moment safety designed to help protect you and your passengers from harm.



Pre-Collision System with Pedestrian Detection³⁴



Dynamic Radar Cruise Control³⁵



Lane Departure Alert³⁶



Automatic High Beams³⁷

TACOMA MODELS



SR

Available in Access Cab 6-Ft. Bed and Double Cab 5-Ft. Bed

Mechanical/Performance

- ✓ 2.7-Liter DOHC 16-Valve 4-Cylinder with VVT-i; 159 hp @ 5200 rpm; 180 lb.-ft. @ 3800 rpm; 6-speed automatic transmission
- ✓ 3.5-Liter DOHC V6 direct-injection Atkinson-cycle with 278 hp @ 6000 rpm; 265 lb.-ft. @ 4600 rpm; 6-speed automatic transmission
- ✓ Rear-Wheel Drive (RWD) or 4WDemand part-time 4WD

Exterior Features

- ✓ Dark gray grille with black surround
- ✓ 16-in. styled steel wheels
- ✓ Projector-beam headlights with turn Daytime Running Lights (DRL)
- ✓ Deck rail system
- ✓ Sliding rear window with privacy glass
- ✓ Fiber-reinforced Sheet-Molded Composite (SMC) bed

Interior Features

- ✓ Integrated backup camera³⁸
- ✓ 4.2-in. color Multi-Information Display (MID)
- ✓ Power windows and door locks
- ✓ Tire Pressure Monitor System (TPMS)³⁹

Audio Multimedia

- ✓ Audio with 7.0-in. touchscreen, and Apple CarPlay^{®25} & Android Auto^{™28} & Amazon Alexa³¹ compatible
- ✓ Connected Services:¹⁸ Safety Connect^{®19} with 1-year trial⁴⁰ and Wi-Fi Connect²³ with up to 2 GB within 3-month trial⁴¹
- ✓ Bluetooth^{®42} wireless technology
- ✓ Three total USB ports:⁴³ one USB media port, two USB charge ports

Safety Features

- ✓ Toyota Safety Sense[™] P (TSS-P)³³ includes:
 - Pre-Collision System with Pedestrian Detection (PCS w/PD)³⁴
 - Lane Departure Alert (LDA)³⁶
 - Automatic High Beams (AHB)³⁷
 - Dynamic Radar Cruise Control (DRCC)³⁵
- ✓ Star Safety System[™]

Packages/Options

- ✓ Utility Package includes:
 - Adds black door handles, mirror caps and bumper, and fixed rear window
 - Removes rear seats and rear cup holders
 - Removes variable intermittent windshield wipers
- ✓ SR Convenience Package includes:
 - Remote keyless entry
- ✓ SX Package includes:
 - 16-in. black alloy wheels
 - Black overfenders, mirror caps and door handles



SR5

Available in Access Cab 6-Ft. Bed and Double Cab 5-Ft. Bed or 6-Ft. Bed

Mechanical/Performance

- ✓ 2.7-Liter DOHC 16-Valve 4-Cylinder with VVT-i; 159 hp @ 5200 rpm; 180 lb.-ft. @ 3800 rpm; 6-speed automatic transmission
- ✓ 3.5-Liter DOHC V6 direct-injection Atkinson-cycle with 278 hp @ 6000 rpm; 265 lb.-ft. @ 4600 rpm; 6-speed automatic transmission
- ✓ Rear-Wheel Drive (RWD) or 4WDemand part-time 4WD

Exterior Features

- ✓ Charcoal grille with chrome surround
- ✓ 16-in. styled steel wheels (4-cyl.)
- ✓ 16-in. dark gray alloy wheels (V6)
- ✓ Projector-beam headlights with turn Daytime Running Lights (DRL) and integrated fog lights
- ✓ Chrome rear bumper

Interior Features

- ✓ 4.2-in. color Multi-Information Display (MID)
- ✓ Remote keyless entry
- ✓ Power sliding rear window with privacy glass (V6 Double Cab only)
- ✓ Fabric-trimmed seats; 10-way power-adjustable driver's seat including 2-way lumbar support (V6 only)

Audio Multimedia

- ✓ Audio with 8.0-in. touchscreen, and Apple CarPlay^{®25} & Android Auto^{™28} & Amazon Alexa³¹ compatible
- ✓ Connected Services:¹⁸ Safety Connect^{®19} with 1-year trial⁴⁰ and Wi-Fi Connect²³ with up to 2 GB within 3-month trial⁴¹
- ✓ Bluetooth^{®42} wireless technology
- ✓ Three total USB ports:⁴³ one USB media port, two USB charge ports

Safety Features

- ✓ Toyota Safety Sense[™] P (TSS-P)³³ includes:
 - Pre-Collision System with Pedestrian Detection (PCS w/PD)³⁴
 - Lane Departure Alert (LDA)³⁶
 - Automatic High Beams (AHB)³⁷
 - Dynamic Radar Cruise Control (DRCC)³⁵
- ✓ Star Safety System[™]

Packages/Options

- ✓ SR5 Appearance Package (4-cylinder) includes:
 - 16-in. dark gray alloy wheels
 - Color-keyed overfenders
- ✓ 16-in. black alloy wheels
- ✓ Parking Sonar⁴⁴ and Navigation⁴⁵ Package (V6 only) includes:
 - Premium Audio, Dynamic Navigation⁴⁵ with 3-year trial⁴⁶ and Destination Assist²⁴ with 1-year trial⁴⁷
 - Rear parking assist sonar⁴⁴
- ✓ Technology Package (V6 only) includes:
 - Blind Spot Monitor (BSM)⁴⁸ with Rear Cross-Traffic Alert (RCTA)⁴⁹
- ✓ Trail Special Edition Package (V6 Short Bed only) includes:
 - 16-in. TRD Off-Road wheels and tires, lockable bed storage (includes insulation on the driver's side to double as a cooler), black badging, Limited-style grille, unique Black fabric seats with tan stitching, 120V outlet¹⁵ in bed, and all-weather floor liners⁵⁰



TRD Sport

Available in Access Cab 6-Ft. Bed and Double Cab 5-Ft. Bed or 6-Ft. Bed

Mechanical/Performance

- ✓ 3.5-Liter DOHC V6 direct-injection Atkinson-cycle with 278 hp @ 6000 rpm; 265 lb.-ft. @ 4600 rpm; 6-speed manual transmission or 6-speed automatic transmission
- ✓ Rear-Wheel Drive (RWD) or 4WDemand part-time 4WD

Exterior Features

- ✓ Gray grille with smoked finish and chrome surround
- ✓ 17-in. machined alloy wheels
- ✓ Projector-beam headlights with LED Daytime Running Lights (DRL) and integrated wide-angle fog lights
- ✓ 120V/400W in-deck AC power outlet¹⁵

Interior Features

- ✓ Front dual zone automatic climate control
- ✓ Smart Key System⁵¹ on driver's and front passenger door with Push Button Start (A/T only)
- ✓ Fabric-trimmed seats; 10-way power-adjustable driver's seat including 2-way lumbar support
- ✓ Qi-compatible wireless smartphone charging¹⁶
- ✓ Power sliding rear window with privacy glass (Double Cab only)

Audio Multimedia

- ✓ Audio with 8.0-in. touchscreen, and Apple CarPlay^{®25} & Android Auto^{™28} & Amazon Alexa³¹ compatible
- ✓ Connected Services:¹⁸ Safety Connect^{®19} with 1-year trial⁴⁰ and Wi-Fi Connect²³ with up to 2 GB within 3-month trial⁴¹
- ✓ Three total USB ports:⁴³ one USB media port, two USB charge ports

Safety Features

- ✓ Toyota Safety Sense[™] P (TSS-P)³³ includes:
 - Pre-Collision System with Pedestrian Detection (PCS w/PD)³⁴
 - Lane Departure Alert (LDA)³⁶
 - Automatic High Beams (AHB)³⁷
 - Dynamic Radar Cruise Control (DRCC)³⁵
- ✓ Star Safety System[™]

Packages/Options

- ✓ TRD Premium Sport Package (Access Cab) includes:
 - Dual zone automatic climate control, heated front seats, auto headlights, Premium Audio, Dynamic Navigation⁴⁵ with 3-year trial⁴⁶ Remote Connect²² with 1-year trial⁵² Destination Assist²⁴ with 1-year trial⁴⁷ and Service Connect²¹ with 10-year trial⁵³
- ✓ TRD Premium Sport Package (Double Cab) includes:
 - Dual zone automatic climate control, leather-trimmed heated front seats, Premium JBL^{®37} Audio (A/T only), Dynamic Navigation⁴⁵ with 3-year trial⁴⁶ Remote Connect²² with 1-year trial⁵² Destination Assist²⁴ with 1-year trial⁴⁷ Service Connect²¹ with 10-year trial⁵³ auto headlights, and moonroof
- ✓ Advanced Technology Package (Double Cab) includes:
 - Panoramic View Monitor (PVM)¹⁷ with camera, rear parking assist sonar,⁴⁴ Blind Spot Monitor (BSM)⁴⁸ with Rear Cross-Traffic Alert (RCTA),⁴⁹ and power color-keyed outside rearview mirrors with turn signal indicators
- ✓ LED headlights with Daytime Running Lights (DRL) and black-bezel LED fog lights
- ✓ Premium Audio, Dynamic Navigation⁴⁵ with 3-year trial⁴⁶ Remote Connect²² with 1-year trial⁵² Destination Assist²⁴ with 1-year trial⁴⁷ and Service Connect²¹ with 10-year trial⁵³
- ✓ Premium Package (Double Cab M/T) includes:
 - dual zone automatic climate control, leather-trimmed seats with heated front seats, auto headlights, moonroof, Premium Audio, Dynamic Navigation⁴⁵ with 3-year trial⁴⁶ and Destination Assist²⁴ with 1-year trial⁴⁷

TACOMA MODELS



TRD Off-Road

Available in Access Cab 6-Ft. Bed and Double Cab 5-Ft. Bed or 6-Ft. Bed

Mechanical/Performance

- ✓ 3.5-Liter DOHC V6 direct-injection Atkinson-cycle with 278 hp @ 6000 rpm; 265 lb.-ft. @ 4600 rpm; 6-speed manual transmission or 6-speed automatic transmission
- ✓ Rear-Wheel Drive (RWD) or 4WDemand part-time 4WD
- ✓ Off-road-tuned suspension with Bilstein®10 shocks
- ✓ Electronically controlled locking rear differential
- ✓ Multi-Terrain Select (MTS) and Crawl Control (CRAWL)® (4x4 A/T only)
- ✓ Active Traction Control (A-TRAC) (4x4 M/T only)

Exterior Features

- ✓ Gray grille with smoked finish and chrome surround, color-keyed heated power outside mirrors with turn signal indicators, color-keyed door handles, black overfenders and chrome rear bumper
- ✓ Black overfenders with chrome rear bumper
- ✓ 16-in. machined contrast alloy wheels

Interior Features

- ✓ Front dual zone automatic climate control with air filter and individual temperature settings for driver and front passenger
- ✓ Smart Key System®11 on driver's and front passenger door with Push Button Start (A/T only)
- ✓ Fabric-trimmed seats; 10-way power-adjustable driver's seat including 2-way lumbar support
- ✓ Integrated backup camera®8
- ✓ 4.2-in. color Multi-Information Display (MID)
- ✓ Power sliding rear window with privacy glass (Double Cab only)

Audio Multimedia

- ✓ Audio with 8.0-in. touchscreen, and Apple CarPlay®25 & Android Auto™28 & Amazon Alexa®31 compatible
- ✓ Connected Services:®18 Safety Connect®19 with 1-year trial,49 Wi-Fi Connect®23 with up to 2 GB within 3-month trial,49 and Remote Connect®22 with 1-year trial®22
- ✓ Three total USB ports:43 one USB media port, two USB charge ports

Safety Features

- ✓ Toyota Safety Sense™ P (TSS-P)®33 includes:
 - Pre-Collision System with Pedestrian Detection (PCS w/PD)®34
 - Lane Departure Alert (LDA)®36
 - Automatic High Beams (AHB)®37
 - Dynamic Radar Cruise Control (DRCC)®35
- ✓ Star Safety System™

Packages/Options

- ✓ TRD Premium Off-Road Package (Access Cab) includes:
 - Dual zone automatic climate control, heated front seats, auto headlights, Premium Audio, Dynamic Navigation®45 with 3-year trial,46 Remote Connect®22 with 1-year trial,52 Destination Assist®24 with 1-year trial,47 and Service Connect®21 with 10-year trial®53
- ✓ TRD Premium Off-Road Package (Double Cab) includes:
 - Dual zone automatic climate control, leather-trimmed heated front seats, Premium JBL®32 Audio (A/T only), Dynamic Navigation®45 with 3-year trial,46 Remote Connect®22 with 1-year trial,52 Destination Assist®24 with 1-year trial,47 Service Connect®21 with 10-year trial,53 auto headlights, and moonroof
- ✓ Advanced Technology Package®5 (Double Cab) includes:
 - Multi-Terrain Monitor (MTM)®9 with camera, rear parking assist sonar,44 Blind Spot Monitor (BSM)®48 with Rear Cross-Traffic Alert (RCTA)®49



Limited

Available in Double Cab 5-Ft. Bed or 6-Ft. Bed

Mechanical/Performance

- ✓ 3.5-Liter DOHC V6 direct-injection Atkinson-cycle with 278 hp @ 6000 rpm; 265 lb.-ft. @ 4600 rpm; 6-speed automatic transmission
- ✓ Rear-Wheel Drive (RWD) or 4WDemand part-time 4WD

Exterior Features

- ✓ LED headlights with LED Daytime Running Lights (DRL) and black-bezel LED fog lights
- ✓ Silver grille with front camera and chrome surround
- ✓ 18-in. polished alloy wheels
- ✓ Power tilt/slide moonroof with sliding sunshade

Interior Features

- ✓ Leather-trimmed seats; 10-way power-adjustable driver's seat including 2-way lumbar support
- ✓ Panoramic View Monitor (PVM)®17
- ✓ Dual zone automatic climate control
- ✓ Auto-dimming day/night rearview mirror and HomeLink®54 universal transceiver

Audio Multimedia

- ✓ Premium JBL®32 Audio with 8.0-in. touchscreen, Dynamic Navigation,45 and Apple CarPlay®25 & Android Auto™28 & Amazon Alexa®31 compatible
- ✓ Connected Services:®18 Safety Connect®19 Remote Connect®22 and Destination Assist®24 with 1-year trials,40,47,52 Service Connect®21 with 10-year trial®53 and Wi-Fi Connect®23 with up to 2 GB within 3-month trial®41 (A/T only)
- ✓ Bluetooth®42 wireless technology
- ✓ Three total USB ports:43 one USB media port, two USB charge ports

Safety Features

- ✓ Toyota Safety Sense™ P (TSS-P)®33 includes:
 - Pre-Collision System with Pedestrian Detection (PCS w/PD)®34
 - Lane Departure Alert (LDA)®36
 - Automatic High Beams (AHB)®37
 - Dynamic Radar Cruise Control (DRCC)®35
- ✓ Star Safety System™
- ✓ Blind Spot Monitor (BSM)®48 with Rear Cross-Traffic Alert (RCTA)®49
- ✓ Rear parking assist sonar®44

Packages/Options

- ✓ Nightshade Special Edition Package includes:
 - 18-in. dark smoke wheels, black wheel locks and lug nuts, exhaust tip, mirror caps, fog light bezels, badging and door handles, and carbon-style black grille
- ✓ Mudguards
- ✓ Tonneau cover



TRD Pro

Available in Double Cab 5-Ft. Bed

Mechanical/Performance

- ✓ 3.5-Liter DOHC V6 direct-injection Atkinson-cycle with 278 hp @ 6000 rpm; 265 lb.-ft. @ 4600 rpm; 6-speed manual transmission or 6-speed automatic transmission
- ✓ 4WDemand part-time 4WD

Exterior Features

- ✓ Hill Start Assist Control (HAC)®4 (A/T only)
- ✓ V6 Tow Package
- ✓ TRD Pro cat-back exhaust
- ✓ TRD-tuned off-road suspension with 2.5-in. FOX®7 Internal Bypass shocks with rear remote reservoirs
- ✓ TRD-tuned front coil springs and rear leaf springs
- ✓ Electronically controlled locking rear differential
- ✓ Multi-Terrain Select (MTS) and Crawl Control (CRAWL)®8 (A/T only)
- ✓ Active Traction Control (A-TRAC) (M/T only)
- ✓ TRD Pro ¼-in.-thick aluminum front skid plate
- ✓ Hood scoop with matte-black decal
- ✓ Heritage "Toyota" front grille
- ✓ LED headlights, sequential LED turn signal indicators, black sport bezels and LED Daytime Running Lights (DRL)
- ✓ Rigid Industries®86 LED fog lights
- ✓ 16-in. TRD black alloy wheels with Goodyear®11 Wrangler®12 All-Terrain tires

Interior Features

- ✓ Black TRD Pro leather-trimmed heated front seats; 10-way power-adjustable driver's seat including 2-way lumbar support
- ✓ Multi-Terrain Monitor (MTM)®9
- ✓ TRD shift knob and TRD floor mats®0
- ✓ Dual zone automatic climate control
- ✓ Power sliding rear window with privacy glass

Audio Multimedia

- ✓ Premium JBL®32 Audio (A/T only) with 8.0-in. touchscreen, Dynamic Navigation,45 and Apple CarPlay®25 & Android Auto™28 & Amazon Alexa®31 compatible
- ✓ Connected Services:®18 Safety Connect®19 Remote Connect®22 and Destination Assist®24 with 1-year trials,40,47,52 Service Connect®21 with 10-year trial®53 and Wi-Fi Connect®23 with up to 2 GB within 3-month trial®41 (A/T only)
- ✓ Three total USB ports:43 one USB media port, two USB charge ports

Safety Features

- ✓ Toyota Safety Sense™ P (TSS-P)®33 includes:
 - Pre-Collision System with Pedestrian Detection (PCS w/PD)®34
 - Lane Departure Alert (LDA)®36
 - Automatic High Beams (AHB)®37
 - Dynamic Radar Cruise Control (DRCC)®35
- ✓ Star Safety System™
- ✓ Blind Spot Monitor (BSM)®48 with Rear Cross-Traffic Alert (RCTA)®49
- ✓ Rear parking assist sonar®44

For additional information on TRD Pro, please visit toyota.com/tacoma

See numbered footnotes in Disclosures section.

TACOMA COLORS & TRIMS



Midnight Black Metallic



Voodoo Blue



Army Green



Lunar Rock



Barcelona Red Metallic



Magnetic Gray Metallic



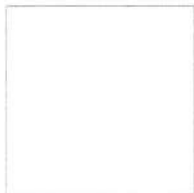
Cement



Silver Sky Metallic



Wind Chill Pearl⁵⁵



Super White

SR and SR5 fabric shown
in Cement



Black with
sand beige
accent stitching



Black with
red accent
stitching

Limited leather trim shown
in Hickory



Black

TRD Sport and TRD Off-Road
fabric shown in Cement/Black



TRD Sport and TRD Off-Road
leather trim shown in Black



TRD Pro premium leather
trim shown in Black



TACOMA WHEELS



16-in. styled steel wheel



16-in. black alloy wheel



16-in. dark gray alloy wheel



17-in. machined alloy wheel



16-in. machined contrast alloy wheel



18-in. polished alloy wheel



16-in. TRD Pro black alloy wheel



16-in. Trail Special Edition dark gray alloy wheel



Nightshade Special Edition 18-in. dark smoke alloy wheel

TACOMA ACCESSORIES

This is a great way to add extra personality to your Tacoma. Not every accessory is available in your area, so for a complete list of accessories, go to toyota.com/tacoma/accessories.



Black tailgate insert



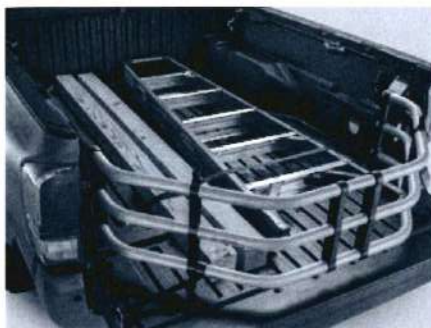
All-weather floor liners⁵⁰



Predator tube steps



BedStep®



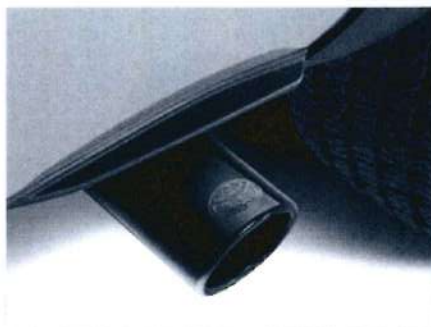
Bed extender³



Doorsill protectors



Blackout emblem overlays



Exhaust tip — black chrome



Power tailgate lock

TACOMA ACCESSORIES



TRD front skid plate



TRD performance air intake system



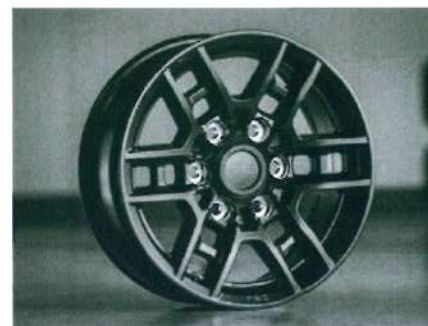
TRD oil filter



TRD performance exhaust with black chrome exhaust tip



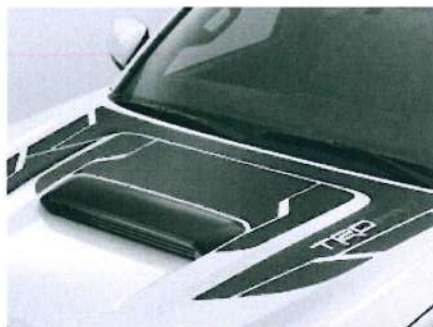
TRD 16-in. off-road beadlock-style alloy wheels



TRD 16-in. forged matte-black alloy wheels



TRD shift knob



TRD Pro graphics

WARRANTIES

Every Toyota Car, Truck and SUV is built to exceptional standards. And that's not idle boasting. We back it up with these Limited Warranty Coverages:

Basic: 36 months/36,000 miles (all components other than normal wear and maintenance items).

Powertrain: 60 months/60,000 miles (engine, transmission/transaxle, drive system, seatbelts and airbags).

Rust-Through: 60 months/unlimited miles (corrosion perforation of sheet metal).

Emissions: Coverages vary under Federal and California regulations. Refer to applicable *Warranty and Maintenance Guide* for details.

Accessories: For Genuine Toyota Accessories purchased at the time of the new vehicle purchase, the Toyota Accessory Warranty coverage is in effect for 36 months/36,000 miles from the vehicle's in-service date, which is the same coverage as the Toyota New Vehicle Limited Warranty.

For Genuine Toyota Accessories purchased after the new vehicle purchase the coverage is 12 months, regardless of mileage, from the date the accessory was installed on the vehicle, or the remainder of any applicable new vehicle warranty, whichever provides greater coverage.

You may be eligible for transportation assistance if it's necessary that your vehicle be kept overnight for repairs covered under warranty. Please see your authorized Toyota dealership for further details.

For complete details about Toyota's warranties, please visit www.toyota.com, refer to the applicable *Warranty and Maintenance Guide* or see your Toyota dealer.

TACOMA FEATURES⁵⁶

S = Standard O = Optional P = Available as part of a package

Exterior

	Access Cab				Double Cab					
	SR	SR5	TRD Sport	TRD Off-Road	SR	SR5	TRD Sport	TRD Off-Road	Limited	TRD Pro
Projector-beam headlights with turn Daytime Running Lights (DRL)	S				S					
Projector-beam headlights with turn Daytime Running Lights (DRL) and integrated fog lights		S				S				
Projector-beam headlights with LED Daytime Running Lights (DRL) and integrated wide-angle fog lights			S	S			S	S		
LED headlights with LED Daytime Running Lights (DRL) and integrated fog lights with chrome bezels									S	
LED headlights with sequential LED turn signals, LED Daytime Running Lights (DRL), Rigid Industries ⁵⁶ LED fog lights, and taillights with black sport bezels										S
LED headlights with LED Daytime Running Lights (DRL) and black-bezel LED fog lights			P	P			P	P		
Dark gray grille with black surround, color-keyed heated power outside mirrors, color-keyed door handles and rear bumper	S				S					
Charcoal grille with chrome surround, color-keyed heated power outside mirrors, door handles and chrome rear bumper (V6 adds color-keyed overfenders)		S				S				
Gray grille with smoked finish and chrome surround, hood scoop, color-keyed heated power outside mirrors with turn signal indicators, color-keyed door handles, overfenders and rear bumper			S				S			
Gray grille with smoked finish and chrome surround, color-keyed heated power outside mirrors with turn signal indicators, color-keyed door handles, black overfenders and chrome rear bumper				S				S		
Silver grille with front camera, chrome surround, chrome-accented heated power outside mirrors with turn signal indicators, chrome-accented door handles, color-keyed overfenders and rear bumper									S	
Heritage-inspired "TOYOTA" front grille with camera, black badging, overfenders, hood scoop with graphic, and color-keyed heated power outside mirrors with turn signal indicators, door handles and rear bumper										S
Fiber-reinforced Sheet-Molded Composite (SMC) inner bed with steel outer panels, storage compartments and rail caps, with easy lower, lockable and removable tailgate	S	S	S	S	S	S	S	S	S	S
Deck rail system with four adjustable tie-down cleats and four fixed cargo bed tie-down points	S	S	S	S	S	S	S	S	S	S
120V/400W deck-mounted AC power outlet ⁵⁵			S	S			S	S	S	S
Power tilt/slide moonroof and sliding sunshade							P	P	S	S
16-in. styled steel wheels with P245/75R16 tires (4-cyl. only)	S	S			S	S				
16-in. black alloy wheels with P245/75R16 tires (V6 only)	O	O				O				
16-in. dark gray alloy wheels with P245/75R16 tires		S/P				S/P				
17-in. machined alloy wheels with P265/65R17 tires			S				S			
16-in. machined contrast alloy wheels with P265/70R16 tires				S				S		
16-in. TRD Pro black alloy wheels with P265/70R16 All-Terrain tires										S
16-in. dark gray alloy wheels with P265/70R16 tires						P				
18-in. polished alloy wheels with P265/60R18 tires									S	
18-in. dark smoke alloy wheels with P265/60R18 tires									P	
Variable intermittent + mist windshield wiper control	S	S	S	S	S	S	S	S	S	S
Fixed rear glass	P				P					
Sliding rear glass with privacy glass	S	S	S	S	S	S				
Power sliding rear window with privacy glass (Double Cab V6 only)						S	S	S	S	S
Smart Key System ⁵¹ on driver's and front passenger door with Push Button Start (not available on M/T)			S	S			S	S	S	S
Panoramic View Monitor (PVM) ¹⁷ with camera							P		S	
Multi-Terrain Monitor (MTM) ⁹ with camera								P		S

See numbered footnotes in Disclosures section.

TACOMA FEATURES

S = Standard O = Optional P = Available as part of a package

	Access Cab				Double Cab					
	SR	SR5	TRD Sport	TRD Off-Road	SR	SR5	TRD Sport	TRD Off-Road	Limited	TRD Pro
Exterior (continued)										
Front and rear mudguards (SR5 requires Appearance Package)		O	O	O		O	O	O	O	O
TRD Pro front skid plate										S
Skid plates: on engine/front suspension	S	S	S	S	S	S	S	S	S	
Hard tri-fold tonneau cover: lockable, weather-resistant and folds to the cab for bed access	O	O	O	O	O	O	O	O	O	
Integrated color-keyed tailgate spoiler	S	S	S	S	S	S	S	S	S	S
Interior										
Analog instrumentation with speedometer, tachometer, coolant temperature and fuel gauges; 4.2-in. color Multi-Information Display (MID) with outside temperature, odometer, tripmeters and average fuel economy	S	S	S		S	S	S		S	
Analog instrumentation with speedometer, tachometer, coolant temperature and fuel gauges; 4.2-in. color Multi-Information Display (MID) with outside temperature, odometer, tripmeters, average fuel economy and inclinometer with roll/pitch displays				S				S		S
Air conditioning	S	S	S	S	S	S	S	S		
Front dual zone automatic climate control with air filter and individual temperature settings for driver and front passenger (V6 only)			P	P	S	S	S	S	S	S
Qi-compatible wireless smartphone and mobile device charging ¹⁶ Compatible smartphone is placed on top of the power transmission pad.			S	S			S	S	S	S
Three total USB ports; ⁴³ one USB media port, two USB charge ports	S	S	S	S	S	S	S	S	S	S
Fabric-trimmed seats; 4-way adjustable driver's seat with lumbar support; 4-way adjustable front passenger seat	S	S			S	S				
Fabric-trimmed seats; 10-way adjustable driver's seat including 2-way power lumbar support; 4-way adjustable front passenger seat (V6 only)		S	S	S		S	S	S		
Leather-trimmed seats; 10-way adjustable driver's seat including 2-way power lumbar support; 4-way adjustable front passenger seat							P	P	S	
Black TRD Pro leather-trimmed heated front seats; 10-way power-adjustable driver's seat including 2-way lumbar support; 4-way adjustable front passenger seat										S
Urethane tilt/telescopic steering wheel with audio controls	S				S					
Leather-trimmed tilt/telescopic steering wheel with audio and Bluetooth ⁴⁴ hands-free phone controls		S	S	S		S	S	S	S	S
Leather-trimmed shift lever			S	S			S	S	S	
TRD Pro shift knob										S
TRD Pro floor mats ⁵⁰										S
Remote keyless entry system with lock, unlock and panic functions	S/P	S	S	S	P	S	S	S		S
Manual day/night rearview mirror (4-cyl. only)	S	S			S	S				
Auto-dimming day/night rearview mirror (V6 only)		S	S	S		S	S	S		
Auto-dimming day/night rearview mirror and HomeLink ⁴⁶ universal transceiver									S	S

See numbered footnotes in Disclosures section.

TACOMA FEATURES

S = Standard O = Optional P = Available as part of a package

Audio Multimedia

Audio — includes 7.0-in. touchscreen, six speakers, Apple CarPlay^{®25} & Android Auto^{™28} & Amazon Alexa³¹ compatible, hands-free phone capability, advanced voice recognition³⁷ and music streaming⁴² via Bluetooth^{®42} wireless technology, and SiriusXM^{®29} with 3-month All Access trial subscription.³⁰ See toyota.com/audio-multimedia for details. Connected Services¹⁸ — Safety Connect^{®19} with 1-year trial,⁴⁰ and Wi-Fi Connect²³ with up to 2 GB within 3-month trial.⁴¹ See toyota.com/connected-services for details.

Access Cab			
SR	SR5	TRD Sport	TRD Off-Road

S

Audio — includes 7.0-in. touchscreen, four speakers, Apple CarPlay^{®25} & Android Auto^{™28} & Amazon Alexa³¹ compatible, hands-free phone capability, advanced voice recognition³⁷ and music streaming⁴² via Bluetooth^{®42} wireless technology, and SiriusXM^{®29} with 3-month All Access trial subscription.³⁰ See toyota.com/audio-multimedia for details. Connected Services¹⁸ — Safety Connect^{®19} with 1-year trial,⁴⁰ and Wi-Fi Connect²³ with up to 2 GB within 3-month trial.⁴¹ See toyota.com/connected-services for details. P

Audio — includes 8.0-in. touchscreen, six speakers, Apple CarPlay^{®25} & Android Auto^{™28} & Amazon Alexa³¹ compatible, hands-free phone capability, advanced voice recognition³⁷ and music streaming⁴² via Bluetooth^{®42} wireless technology, and SiriusXM^{®29} with 3-month All Access trial subscription.³⁰ See toyota.com/audio-multimedia for details. Connected Services¹⁸ — Safety Connect^{®19} with 1-year trial,⁴⁰ and Wi-Fi Connect²³ with up to 2 GB within 3-month trial.⁴¹ See toyota.com/connected-services for details.

S

Audio — includes 8.0-in. touchscreen, six speakers, Apple CarPlay^{®25} & Android Auto^{™28} & Amazon Alexa³¹ compatible, hands-free phone capability and music streaming⁴² via Bluetooth^{®42} wireless technology, SiriusXM^{®29} with 3-month All Access trial subscription.³⁰ See toyota.com/audio-multimedia for details. Connected Services¹⁸ — Safety Connect^{®19} with 1-year trial,⁴⁰ Remote Connect²² with 1-year trial,³² and Wi-Fi Connect²³ with up to 2 GB within 3-month trial.⁴¹ See toyota.com/connected-services for details.

S

S

Premium Audio and Dynamic Navigation⁴⁵ — includes 8.0-in. touchscreen, six speakers, HD Radio,^{™48} Dynamic Navigation⁴⁵ with 3-year trial,⁴⁶ Dynamic POI Search, Dynamic Voice Recognition,³⁹ hands-free phone capability and music streaming⁴² via Bluetooth^{®42} wireless technology, Apple CarPlay^{®25} & Android Auto^{™28} & Amazon Alexa³¹ compatible, and SiriusXM^{®29} with 3-month All Access trial subscription.³⁰ See toyota.com/audio-multimedia for details. Connected Services¹⁸ — Safety Connect^{®19} with 1-year trial,⁴⁰ Wi-Fi Connect²³ with up to 2 GB within 3-month trial,⁴¹ and Destination Assist²⁴ with 1-year trial.⁴⁷ See toyota.com/connected-services for details.

P

Premium Audio with Dynamic Navigation⁴⁵ — includes 8.0-in. touchscreen, six speakers, HD Radio,^{™48} Dynamic Navigation⁴⁵ with 3-year trial,⁴⁶ Dynamic POI Search, Dynamic Voice Recognition,³⁹ hands-free phone capability and music streaming⁴² via Bluetooth^{®42} wireless technology, Apple CarPlay^{®25} & Android Auto^{™28} & Amazon Alexa³¹ compatible, and SiriusXM^{®29} with 3-month All Access trial subscription.³⁰ See toyota.com/audio-multimedia for details. Connected Services¹⁸ — Safety Connect^{®19} with 1-year trial,⁴⁰ Service Connect²¹ with 10-year trial,³³ Remote Connect²² with 1-year trial,³² Wi-Fi Connect²³ with up to 2 GB within 3-month trial,⁴¹ and Destination Assist²⁴ with 1-year trial.⁴⁷ See toyota.com/connected-services for details.

P

Premium Audio with Dynamic Navigation⁴⁵ with JBL[®] and Clarif-Fi^{®32} — includes 8.0-in. touchscreen, six speakers, subwoofer and amplifier, HD Radio,^{™48} Dynamic Navigation⁴⁵ with 3-year trial,⁴⁶ Dynamic POI Search, Dynamic Voice Recognition,³⁹ hands-free phone capability and music streaming⁴² via Bluetooth^{®42} wireless technology, Apple CarPlay^{®25} & Android Auto^{™28} & Amazon Alexa³¹ compatible, and SiriusXM^{®29} with 3-month All Access trial subscription.³⁰ See toyota.com/audio-multimedia for details. Connected Services¹⁸ — Safety Connect^{®19} with 1-year trial,⁴⁰ Service Connect²¹ with 10-year trial,³³ Remote Connect²² with 1-year trial,³² Wi-Fi Connect²³ with up to 2 GB within 3-month trial,⁴¹ and Destination Assist²⁴ with 1-year trial.⁴⁷ See toyota.com/connected-services for details.

P

P

S

S

See numbered footnotes in Disclosures section.

Double Cab					
SR	SR5	TRD Sport	TRD Off-Road	Limited	TRD Pro

S

S

S

S

P

TACOMA FEATURES

S = Standard O = Optional P = Available as part of a package

Safety and Convenience

Toyota Safety Sense™ P (TSS-P)³³ — includes Pre-Collision System with Pedestrian Detection (PCS w/PD);³⁴ Lane Departure Alert (LDA)³⁵ with Sway Warning System (SWS);⁶⁰ Automatic High Beams (AHB)³⁷ and Dynamic Radar Cruise Control (DRCC)³⁵

STAR™ SAFETY SYSTEM Star Safety System™ — includes Vehicle Stability Control (VSC);⁵¹ Traction Control (TRAC), Anti-Lock Brake System (ABS) with Electronic Brake-force Distribution (EBD), Brake Assist (BA)⁶² and Smart Stop Technology® (SST)⁶³

Driver and front passenger Advanced Airbag System⁶⁴

Driver and front passenger seat-mounted side airbags, driver and front passenger knee airbags, and front and rear Roll-sensing Side Curtain Airbags (RSCA)⁶⁴

Driver and front passenger active headrests⁶⁵

3-point seatbelts for all seating positions; driver-side Emergency Locking Retractor (ELR) and Automatic/ Emergency Locking Retractor (ALR/ELR) on all passenger seatbelts

LATCH (Lower Anchors and Tethers for Children) includes lower anchors for front passenger seat on Access Cab and outboard rear seats on Double Cab
Child-protector rear door locks (Double Cab only)

Tire Pressure Monitor System (TPMS)³⁹

Tire Pressure Monitor System (TPMS)³⁹ with individual tire location alert

Blind Spot Monitor (BSM)⁴⁸ with Rear Cross-Traffic Alert (RCTA)⁴⁹

Rear parking assist sonar⁴⁴

Class-IV towing hitch receiver;² ATF cooler (not available on M/T), engine oil cooler, power steering cooler, 130-amp alternator, 4- and 7-pin connector with converter, and Trailer-Sway Control (TSC)⁴ (V6 only)

Engine immobilizer⁶⁶

ToyotaCare featuring a complimentary maintenance plan with Roadside Assistance⁶⁷

	Access Cab				Double Cab					
	SR	SR5	TRD Sport	TRD Off-Road	SR	SR5	TRD Sport	TRD Off-Road	Limited	TRD Pro
Toyota Safety Sense™ P (TSS-P) ³³ — includes Pre-Collision System with Pedestrian Detection (PCS w/PD); ³⁴ Lane Departure Alert (LDA) ³⁵ with Sway Warning System (SWS); ⁶⁰ Automatic High Beams (AHB) ³⁷ and Dynamic Radar Cruise Control (DRCC) ³⁵	S	S	S	S	S	S	S	S	S	S
STAR™ SAFETY SYSTEM Star Safety System™ — includes Vehicle Stability Control (VSC); ⁵¹ Traction Control (TRAC), Anti-Lock Brake System (ABS) with Electronic Brake-force Distribution (EBD), Brake Assist (BA) ⁶² and Smart Stop Technology® (SST) ⁶³	S	S	S	S	S	S	S	S	S	S
Driver and front passenger Advanced Airbag System ⁶⁴	S	S	S	S	S	S	S	S	S	S
Driver and front passenger seat-mounted side airbags, driver and front passenger knee airbags, and front and rear Roll-sensing Side Curtain Airbags (RSCA) ⁶⁴	S	S	S	S	S	S	S	S	S	S
Driver and front passenger active headrests ⁶⁵	S	S	S	S	S	S	S	S	S	S
3-point seatbelts for all seating positions; driver-side Emergency Locking Retractor (ELR) and Automatic/ Emergency Locking Retractor (ALR/ELR) on all passenger seatbelts	S	S	S	S	S	S	S	S	S	S
LATCH (Lower Anchors and Tethers for Children) includes lower anchors for front passenger seat on Access Cab and outboard rear seats on Double Cab	S	S	S	S	S	S	S	S	S	S
Child-protector rear door locks (Double Cab only)					S	S	S	S	S	S
Tire Pressure Monitor System (TPMS) ³⁹	S				S					
Tire Pressure Monitor System (TPMS) ³⁹ with individual tire location alert		S	S	S		S	S	S	S	S
Blind Spot Monitor (BSM) ⁴⁸ with Rear Cross-Traffic Alert (RCTA) ⁴⁹			P	P			P	P	S	S
Rear parking assist sonar ⁴⁴		P	P	P		P	P	P	S	S
Class-IV towing hitch receiver; ² ATF cooler (not available on M/T), engine oil cooler, power steering cooler, 130-amp alternator, 4- and 7-pin connector with converter, and Trailer-Sway Control (TSC) ⁴ (V6 only)	S	S	S	S	S	S	S	S	S	S
Engine immobilizer ⁶⁶	S	S	S	S	S	S	S	S	S	S
ToyotaCare featuring a complimentary maintenance plan with Roadside Assistance ⁶⁷	S	S	S	S	S	S	S	S	S	S

TACOMA FEATURES

S = Standard O = Optional P = Available as part of a package

Packages and Options

	Access Cab				Double Cab					
	SR	SR5	TRD Sport	TRD Off-Road	SR	SR5	TRD Sport	TRD Off-Road	Limited	TRD Pro
16-in. black alloy wheel		O				O				
16-in. dark gray alloy wheel		O				O				
Advanced Technology Package: Panoramic View Monitor (PVM); ⁷⁷ power, color-keyed outside rearview mirrors with turn signal and blind spot warning ⁴⁸ indicators, and rear parking sonar ⁴⁴ (D-Cab only)							P			
Advanced Technology Package: Multi-Terrain Monitor (MTM); ² power, color-keyed outside rearview mirrors, and rear parking sonar ⁴⁴ (D-Cab only)								P ⁵		
Nightshade Special Edition Package: 18-in. dark smoke wheels, black wheel locks and lug nuts, exhaust tip, mirror caps, fog light bezels, badging and door handles, and carbon-style black grille									P	
Utility Package (4-Cyl. Access Cab): removes rear speakers, seats (seatbacks, headrests and seatbelts), along with rear cup holders and intermittent wiper. Adds black door handles, black mirror caps, black rear bumpers and fixed rear window.	P									
SR5 Dynamic Navigation⁴⁵ Package: SR5 parking sonar, ⁴⁴ Premium Audio with Dynamic Navigation ⁴⁵ with 3-year trial, ⁴⁶ and Destination Assist ²⁴ with 1-year trial ⁴⁷ (V6 only)		P				P				
Premium Audio and Navigation⁴⁵ Package: Premium Audio, Dynamic Navigation ⁴⁵ with 3-year trial, ⁴⁶ Remote Connect ²² with 1-year trial, ⁵² Destination Assist ²⁴ with 1-year trial, ⁴⁷ and Service Connect ²¹ with 10-year trial ⁵³ (A/T only)			P	P			P	P		
LED headlights with LED DRL and black-bezel LED fog lights			P	P			P	P		
SR Convenience Package: includes remote keyless entry	P				P					
TRD Premium Off-Road Package (Access Cab): includes heated front seats, auto headlights, Premium Audio, Dynamic Navigation ⁴⁵ with 3-year trial, ⁴⁶ Remote Connect ²² with 1-year trial, ⁵² Destination Assist ²⁴ with 1-year trial, ⁴⁷ and Service Connect ²¹ with 10-year trial ⁵³				P						
TRD Premium Off-Road Package (Double Cab A/T): includes leather-trimmed seats with heated front seats, auto headlights, moonroof, Premium JBL ^{®32} Audio, Dynamic Navigation ⁴⁵ with 3-year trial, ⁴⁶ Remote Connect ²² with 1-year trial, ⁵² Destination Assist ²⁴ with 1-year trial, ⁴⁷ and Service Connect ²¹ with 10-year trial ⁵³								P		
TRD Premium Sport Package (Access Cab M/T): includes heated front seats, auto headlights, Premium Audio, Dynamic Navigation ⁴⁵ with 3-year trial, ⁴⁶ and Destination Assist ²⁴ with 1-year trial ⁴⁷			P							
Premium Package (Double Cab M/T): includes dual zone automatic climate control, leather-trimmed seats with heated front seats, auto headlights, moonroof, Premium Audio, Dynamic Navigation ⁴⁵ with 3-year trial, ⁴⁶ and Destination Assist ²⁴ with 1-year trial ⁴⁷							P	P		
TRD Premium Sport Package (Double Cab A/T): includes leather-trimmed seats with heated front seats, auto headlights, moonroof, Premium JBL ^{®32} Audio, Dynamic Navigation ⁴⁵ with 3-year trial, ⁴⁶ Remote Connect ²² with 1-year trial, ⁵² Destination Assist ²⁴ with 1-year trial, ⁴⁷ and Service Connect ²¹ with 10-year trial ⁵³							P			
TRD Premium Sport Package (Access Cab): includes heated front seats, auto headlights, Premium Audio, Dynamic Navigation ⁴⁵ with 3-year trial, ⁴⁶ Remote Connect ²² with 1-year trial, ⁵² Destination Assist ²⁴ with 1-year trial, ⁴⁷ and Service Connect ²¹ with 10-year trial ⁵³			P							
SR5 Appearance Package (4-Cyl.): 16-in. dark gray alloy wheels and color-keyed overfenders		P				P				
SX Package: black 16-in. alloy wheels, overfenders, mirror caps, door handles and headlight bezels	P									
Trail Special Edition Package: 16-in. TRD Off-Road wheels and tires, lockable bed storage (includes insulation on the driver's side to double as a cooler), black badging, Limited-style grille, unique fabric seats with tan stitching, 120V outlet ³⁵ in bed, and all-weather floor liners ⁵⁰						P				
Technology Package: parking sonar ⁴⁴ and Blind Spot Monitor (BSM) ⁴⁸ with Rear Cross-Traffic Alert (RCTA) ⁴⁹ (requires colored-keyed rear bumper)		P				P				
Technology Package: Blind Spot Monitor (BSM) ⁴⁸ with Rear Cross-Traffic Alert (RCTA) ⁴⁹ (requires colored-keyed rear bumper)			P	P			P	P		
Tonneau cover	O	O	O	O	O	O	O	O	O	

See numbered footnotes in Disclosures section.

TACOMA SPECIFICATIONS

S = Standard O = Optional P = Available as part of a package

Mechanical/Performance

ENGINE

2.7-Liter DOHC 16-Valve 4-Cylinder with VVT-i;
159 hp @ 5200 rpm; 180 lb.-ft. @ 3800 rpm

3.5-Liter V6 Direct-Injection Atkinson-Cycle Engine
with 278 hp @ 6000 rpm/265 lb.-ft. @ 4600 rpm

TRD Pro cat-back exhaust

EMISSION RATING

Low Emission Vehicle III (LEV-III)

TRANSMISSION

6-speed manual transmission

6-speed Electronically Controlled automatic
Transmission with intelligence (ECT-i) (A/T only)

Clutch start-cancel switch (M/T only)

DRIVETRAIN

Rear-Wheel Drive (RWD) with Automatic Limited-Slip
Differential (Auto LSD)⁶⁹

4WDemand part-time 4WD with electronically
controlled transfer case and Automatic Limited-Slip
Differential (Auto LSD)⁶⁸

Active Traction Control (A-TRAC) (M/T only)

BODY CONSTRUCTION

One-piece frame rails with 8-in. cross members
and fully boxed front sub-frame

SUSPENSION

Coil-spring double-wishbone front suspension
and stabilizer bar; leaf spring rear suspension with
staggered outboard-mounted gas shock absorbers
and stabilizer bar

TRD sport-tuned suspension

TRD-tuned off-road suspension with Bilstein^{®10} shocks

TRD-tuned off-road suspension with 2.5-in. FOX^{®7}
Internal Bypass coil-overs and rear remote
reservoir shocks

STEERING

Variable-assist power rack-and-pinion steering

Turning circle diameter, curb-to-curb (ft.)
(Standard Bed/Long Bed)

BRAKES

Power-assisted ventilated front disc brakes;
rear drum brakes with tandem booster and
Star Safety System[™]

Dimensions

EXTERIOR (in.)

Overall height	70.6	70.6	70.6	70.6	70.6	70.6	70.6	70.6	70.6	71.6
Overall width	74.4	74.4	75.2	75.2	74.4	74.4	75.2	75.2	75.2	75.2
Overall length (Standard Bed/Long Bed)	212.3/—	212.3/—	212.3/—	212.3/—	212.3/—	212.3/225.5	212.3/225.5	212.3/225.5	212.3/—	212.3/—
Wheelbase (Standard Bed/Long Bed)	127.4/—	127.4/—	127.4/—	127.4/—	127.4/—	127.4/140.6	127.4/140.6	127.4/140.6	127.4/—	127.4/—
Bed length (Standard Bed/Long Bed)	73.7/—	73.7/—	73.7/—	73.7/—	60.5/73.7	60.5/73.7	60.5/73.7	60.5/73.7	60.5/—	60.5/—
Bed height	19.1	19.1	19.1	19.1	19.1	19.1	19.1	19.1	19.1	19.1
Bed width	41.5	41.5	41.5	41.5	41.5	41.5	41.5	41.5	41.5	41.5
Track (front/rear)	63/63.2	63/63.2	63/63.2	63/63.2	63/63.2	63/63.2	63/63.2	63/63.2	63/63.2	64/64.2

INTERIOR (front/rear-seat) (in.)

Head room	39.7/34.9	39.7/34.9	39.7/34.9	39.7/34.9	39.7/38.3	39.7/38.3	39.7/38.3	39.7/38.3	39.7/38.3	39.7/38.3
Hip room	57.2/51.7	57.2/51.7	57.2/51.7	57.2/51.7	57.2/56.3	57.2/56.3	57.2/56.3	57.2/56.3	57.2/56.3	57.2/56.3
Leg room	42.9/24.6	42.9/24.6	42.9/24.6	42.9/24.6	42.9/32.6	42.9/32.6	42.9/32.6	42.9/32.6	42.9/32.6	42.9/32.6
Shoulder room	58.3/56.5	58.3/56.5	58.3/56.5	58.3/56.5	58.3/58.9	58.3/58.9	58.3/58.9	58.3/58.9	58.3/58.9	58.3/58.9

TACOMA SPECIFICATIONS

S = Standard O = Optional P = Available as part of a package

OFF-HIGHWAY

Approach/departure/breakover angle (degrees)

	Access Cab				Double Cab					
	SR	SR5	TRD Sport	TRD Off-Road	SR	SR5	TRD Sport	TRD Off-Road	Limited	TRD Pro
Standard Bed (4x2)	29/23.5/24*	29/23.5/24	29/23.5/24	—/—/—	—/—/—	—/—/—	—/—/—	—/—/—	—/—/—	—/—/—
(4x4)	29/23.5/21	29/23.5/21	29/23.5/21	32/23/24	—/—/—	—/—/—	—/—/—	—/—/—	—/—/—	—/—/—
Short Bed (4x2)	—/—/—	—/—/—	—/—/—	—/—/—	29/23.5/21	29/23.5/21	29/23.5/21	32/23.1/20	29/23.5/21	—/—/—
(4x4)	—/—/—	—/—/—	—/—/—	—/—/—	29/23.5/21	29/23.5/21	29/23.5/21	32/23.5/21	29/23.5/21	35/19.1/23.9
Long Bed (4x2)	—/—/—	—/—/—	—/—/—	—/—/—	—/—/—	29/23.1/20	29/23.1/20	—/—/—	—/—/—	—/—/—
(4x4)	—/—/—	—/—/—	—/—/—	—/—/—	—/—/—	29/23.1/21	29/23.1/21	32/23.1/21	—/—/—	—/—/—
Ground clearance (in.)	9.4	9.4	9.4	9.4	9.4	9.4	9.4	9.4	9.4	9.4
Electronically controlled locking rear differential				S				S		S
RATIOS										
4x4 transfer case ratio (high/low)	1.00/2.57	1.00/2.57	1.00/2.57	1.00/2.57	1.00/2.57	1.00/2.57	1.00/2.57	1.00/2.57	1.00/2.57	1.00/2.57
Differential ratio, V6 M/T			4.30	4.30			4.30	4.30		4.30
Differential ratio, 4-cyl./V6 A/T	4.30/3.909	4.30/3.909	—/3.909	—/3.909	4.30/3.909	4.30/3.909	—/3.909	—/3.909	—/3.909	—/3.909

Weights and Capacities

Curb weight (lb.), 4-cyl. A/T (4x2/4x4)	3915/4155	3915/4155	—/—	—/—	4040/—	4040/—	—/—	—/—	—/—	—/—
Curb weight (lb.), V6 M/T (4x2/4x4)	—/—	—/—	—/4340	—/—	—/—	—/—	—/4465	—/4465	—/—	—/4465
Curb weight (lb.), V6 A/T (4x2/4x4)	4075/4315	4075/4315	4075/4315	—/4315	—/4445	4205/4445	4205/4445	4205/4495	4255/4505	—/4445
Curb weight (lb.), V6 A/T Long Bed (4x2/4x4)						4245/4495	4245/4495	—/4495	—/4550	
Gross Vehicle Weight Rating (GVWR) (lb.)	5600	5600	5600	5600	5600	5600	5600	5600	5600	5600
Gross Combined Weight Rating (GCWR) (lb.)	11,360	11,360	11,360	11,360	11,360	11,360	11,360	11,360	11,360	11,360
Payload (lb.) ² 4-cyl. A/T (4x2/4x4)	1685/1445	1685/1445	—/—	—/—	1560/—	1560/—	—/—	—/—	—/—	—/—
Payload (lb.) ² V6 M/T (4x2/4x4)	—/—	—/—	—/1260	—/—	—/—	—/—	—/1135	—/1135	—/—	—/1135
Payload (lb.) ² V6 A/T (4x2/4x4)	1685/1445	1685/1445	1525/1285	—/1285	—/1155	1395/1155	1395/1155	1395/1155	1345/1095	—/1155
Payload (lb.) ² V6 A/T Long Bed (4x2/4x4)						1355/1105	1355/1105	—/1105	—/1095	
Fuel tank (gal.)	21.1	21.1	21.1	21.1	21.1	21.1	21.1	21.1	21.1	21.1
Passenger volume (cu. ft.) (behind front/rear seat)	57.5/28.1	57.5/28.1	57.5/28.1	57.5/28.1	57.5/42.6	57.5/42.6	57.5/42.6	57.5/42.6	57.5/42.6	57.5/42.6
Seating capacity	4	4	4	4	5	5	5	5	5	5

TOWING²

Class-IV towing hitch receiver, ATF cooler (not available on M/T), engine oil cooler, power steering cooler, 130-amp alternator, 4- and 7-pin connector with converter, and Trailer-Sway Control (TSC)³ (V6 only)

	S	S	S	S	S	S	S	S	S	S
Tongue load (lb.), 4-cyl. A/T (4x2/4x4)	350/350	350/350	—/—	—/—	350/—	350/—	—/—	—/—	—/—	—/—
Tongue load (lb.), V6 M/T (4x2/4x4)	—/—	—/—	—/650	—/—	—/—	—/—	—/640	—/640	—/—	—/640
Tongue load (lb.), V6 A/T (4x2/4x4)	680/650	680/650	680/650	—/650	—/640	670/640	670/640	670/640	660/640	—/640
Towing capacity (lb.) ² 4-cyl. A/T (4x2/4x4)	3500/3500	3500/3500	—/—	—/—	3500/—	3500/—	—/—	—/—	—/—	—/—
Towing capacity (lb.) ² V6 M/T (4x2/4x4)	—/—	—/—	—/6500	—/6500	—/—	—/—	—/6400	—/6400	—/—	—/6400
Towing capacity (lb.) ² V6 A/T (4x2/4x4)	6800/6500	6800/6500	6800/6500	—/6500	—/6400	6700/6400	6700/6400	6700/6400	6600/6400	—/6400
Towing capacity (lb.) ² V6 A/T Long Bed (4x2/4x4)						6600/6400	6600/6400	—/6400	—/6400	

Tires

Spare: full-size	S	S	S	S	S	S	S	S	S	S
------------------	---	---	---	---	---	---	---	---	---	---

Mileage Estimates (mpg city/highway)⁶⁹

4-cyl. A/T (4x2/4x4)	20/23; 19/22	20/23; 19/22	—/—	—/—	20/23; —/—	20/23; —/—	—/—	—/—	—/—	—/—
V6 M/T (4x2/4x4)	—/—	—/—	—/—; 17/21	—/—	—/—; —/—	—/—; —/—	—/—; 17/21	—/—; 17/21	—/—	—/—; 17/21
V6 A/T (4x2/4x4)	19/24; 18/22	19/24; 18/22	19/24; 18/22	—/—; 18/22	—/—; 18/22	19/24; 18/22	19/24; 18/22	19/24; 18/22	19/24; 18/22	—/—; 18/22

DISCLOSURES

1. The Toyota Tacoma is designed to meet most off-road driving requirements, but off-roading is inherently dangerous and may result in vehicle damage. Toyota encourages responsible operation to help protect you, your vehicle and the environment. Seatbelts should be worn at all times. Do not allow passengers to ride in cargo area. 2. Before towing, confirm your vehicle and trailer are compatible, hooked up and loaded properly and that you have any necessary additional equipment. Do not exceed any Weight Ratings and follow all instructions in your *Owner's Manual*. The maximum you can tow depends on base curb weight plus the total weight of any cargo, occupants, and added vehicle equipment. "Added vehicle equipment" includes additional standard/optional equipment and accessories added by the manufacturer, dealers, and/or vehicle owners. The only way to be certain of your vehicle's exact curb weight is to weigh your vehicle without passengers or cargo. [Calculated with the new SAE J2807 method.] Installation of a tow hitch receiver or other accessories located near the rear bumper or side-door kick sensors may require disabling or removing the kick sensor, and the sensor operation setting in your vehicle should be turned off. See *Owner's Manual* for limitations. 3. Payload Capacity is the calculation of GVWR minus curb weight and should be used for comparison purposes only. The maximum amount of passenger and cargo weight your vehicle can carry is the Load Carrying Capacity indicated on the label(s) on the driver's doorjamb. 4. Trailer-Sway Control (TSC) is an electronic system designed to help the driver maintain vehicle control under adverse conditions. It is not a substitute for safe driving practices. Factors including speed, road conditions, weather and driver steering input can all affect whether TSC will be effective in preventing a loss of control. See *Owner's Manual* for additional limitations and details. 5. Replaces chrome rear bumper with color-keyed rear bumper on TRD Off-Road models. 6. Rigid Industries® is a registered trademark of JST Performance, LLC d/b/a Rigid Industries. 7. FOX is a registered trademark of FOX Factory, Inc. 8. Crawl Control is designed for driving on difficult terrain at low speeds and assists the driver by controlling acceleration and braking, allowing the driver to focus on steering. See *Owner's Manual* for additional limitations and details. 9. The Multi-Terrain Monitor view is limited and can be affected by environmental conditions. See *Owner's Manual* for additional limitations and details. 10. Bilstein® is a registered trademark of ThyssenKrupp Bilstein GmbH FED REP GERMANY. 11. Goodyear® is a registered trademark of The Goodyear Tire & Rubber Company. 12. Wrangler® is a registered trademark of Goodyear Tire & Rubber Company. 13. Kevlar® is a registered trademark of E. I. du Pont de Nemours and Company. 14. Hill Start Assist Control is designed to help minimize backward rolling on steep ascents. It is not a substitute for safe driving judgment and practices. Factors including speed, grade, surface conditions and driver input can all affect whether HAC will be effective in preventing a loss of control. See *Owner's Manual* for additional limitations and details. 15. Rated for 400 watts for a single three-prong outlet. See *Owner's Manual* for additional limitations and details. 16. Qi wireless charging may not be compatible with all mobile phones, MP3/WMA players and like models. When using the wireless charging system, avoid placing metal objects between the wireless charger and the mobile device when charging is active. Doing so may cause metal objects to become hot and could cause burns. 17. The Panoramic View Monitor does not provide a comprehensive view of the area surrounding the vehicle. You should also look around outside your vehicle and use your mirrors to confirm surrounding clearance. Environmental conditions may limit effectiveness and view may become obscured. See *Owner's Manual* for additional limitations and details. 18. Connected Services depends on an operative telematics device, a cellular connection, navigation map data, GPS signal strength and other factors outside of Toyota's control, all of which can limit system functionality or availability, including access to response center and emergency support. Service may vary by vehicle and region. Subscription required after trial. Terms of Use apply. Data charges may apply. Apps and services subject to change at any time without notice. See [toyota.com/connected-services](https://www.toyota.com/connected-services) for details. To learn about Toyota's data collection, use, sharing and retention practices, please visit <https://www.toyota.com/privacycts/>. Stolen vehicle police report required to use Stolen Vehicle Locator. 19. Safety Connect® depends on an operative telematics device, a cellular connection, GPS signal strength and other factors outside of Toyota's control, all of which can limit system functionality or availability, including access to response center and emergency support. Stolen vehicle police report required to use Stolen Vehicle Locator. Some features may require the Toyota app. Registration required. Subscription required after trial. Service subject to change at any time without notice. Terms of Use apply. Data charges may apply. Service may vary by vehicle and region. See usage precautions and service limitations in *Owner's Manual* and at [toyota.com/connected-services/](https://www.toyota.com/connected-services/) for additional details. To learn about Toyota's data collection, use, sharing and retention practices, please visit <https://www.toyota.com/privacycts/>. 20. Requires adequate cellular coverage and GPS signal strength. May not work in all areas. Service may vary by vehicle and region. See Toyota Dealer for details and exclusions. 21. Information provided is based on the last time data was collected from the vehicle and may not be up to date. Service Connect depends on an operative telematics device, a cellular connection, navigation map data, GPS signal strength and other factors outside of Toyota's control, which can limit functionality or availability. Service may vary by vehicle and region. Registration required. Service subject to change at any time without notice. Terms and conditions of subscription service agreement apply. See usage precautions and service limitations in *Owner's Manual* and at [toyota.com/connected-services](https://www.toyota.com/connected-services/) for additional details. To learn about Toyota's data collection, use, sharing and retention practices, please visit <https://www.toyota.com/privacycts/>. 22. Use only if aware of circumstances surrounding vehicle and it is legal and safe to do so (e.g., do not remotely start engine if vehicle is in an enclosed space or vehicle is occupied by a child). Toyota's Remote Connect depends on an operative telematics device, a cellular connection, GPS signal strength and other factors outside of Toyota's control, which can limit system functionality or availability. Service may vary by vehicle and region. Registration and Toyota app download required. Subscription required after trial. Terms of Use apply. Data charges may apply. Remote start/stop not available on manual-transmission-equipped vehicles. Services subject to change at any time without notice. See usage precautions and service limitations in *Owner's Manual* and at https://www.toyota.com/connected-services for additional details. To learn about Toyota's data collection, use, sharing and retention practices, please visit <https://www.toyota.com/privacycts/>. 23. Eligible vehicle and wireless service required. Coverage and service not available everywhere. Valid in the contiguous U.S. and Alaska. Do not drive distracted. Go to att.com/toyota for terms and conditions. Data usage and charges apply. Up to 5 devices can be supported using in-vehicle connectivity. Apps and services subject to change at any time without notice. 24. Destination Assist depends on an operative telematics device, a cellular connection, navigation map data and GPS signal strength and other factors outside of Toyota's control, which can limit system ability functionality or availability. Use common sense when relying on this information. Service may vary by vehicle and region. Registration required. Services subject to change at any time without notice. Terms of Use apply. See *Owner's Manual* and [toyota.com/connected-services](https://www.toyota.com/connected-services/) for additional limitations and details. To learn about Toyota's data collection, use, sharing and retention practices, please visit <https://www.toyota.com/privacycts/>. 25. Apps and services are subject to change at any time without notice. Data charges may apply. Apple CarPlay® functionality requires a compatible iPhone® connected with an approved data cable into the USB media port. Apple CarPlay® is a registered trademark of Apple Inc. 26. iPhone® is a registered trademark of Apple Inc. All rights reserved. 27. Android is a trademark of Google LLC. 28. Vehicle user interface is a product of Google and its terms and privacy statement apply. To use Android Auto on your audio display, you'll need an Android Auto compatible vehicle and Android phone. For phone compatibility visit: <https://www.android.com/auto/>. Requires compatible smartphone connected with an approved data cable into the USB media port, and data plan rates apply. Apps and services vary by phone carrier and are subject to change at any time without notice. Android, Android Auto and Waze are trademarks of Google. 29. SiriusXM® audio services require a subscription sold separately by Sirius XM Radio Inc. If you decide to continue service after your trial, the subscription plan you choose will automatically renew thereafter and you will be charged according to your chosen payment method at then-current rates. Fees and taxes apply. To cancel, you must call SiriusXM at 1-866-635-2349. See SiriusXM Customer Agreement for complete terms at www.siriusxm.com. All fees and programming subject to change. Not all vehicles or devices are capable of receiving all services offered by SiriusXM. Current information and features may not be available in all locations, or on all receivers. ©2021 Sirius XM Radio Inc. SiriusXM and all related marks and logos are trademarks of Sirius XM Radio Inc. 30. SiriusXM All Access trial length and service availability may vary by model, model year or trim. 31. Amazon, Alexa and all related logos are trademarks of Amazon.com, Inc. or its affiliates. Certain functions require adequate signal strength and smartphone technology/connectivity. Not all Amazon Alexa functionality is available for in-vehicle use. See applicable app for details. Download of the Toyota+Alexa app is required to begin in-vehicle use of Alexa. Data charges may apply for certain functions. Apps, prices and services subject to change at any time without notice. To learn more, go to <https://www.toyota.com/audio-multimedia>. To learn more about Toyota's data collection, use, sharing and retention practices, please visit <https://www.toyota.com/privacycts/>. 32. JBL® and Clarif-Fi® are registered trademarks of Harman International Industries, Inc. 33. Toyota Safety Sense™ effectiveness is dependent on many factors including road, weather and vehicle conditions. Drivers are responsible for their own safe driving. Always pay attention to your surroundings and drive safely. See *Owner's Manual* for additional limitations and details. 34. The Pre-Collision System (PCS) with Pedestrian Detection (PD) is designed to determine if impact is imminent and help reduce impact speed and damage in certain frontal collisions involving a vehicle or a pedestrian. PCS w/PD is not a substitute for safe and attentive driving. System effectiveness depends on many factors, such as speed, size and position of pedestrian and weather, light and road conditions. See *Owner's Manual* for additional limitations and details. 35. Dynamic Radar Cruise Control (DRCC) is designed to assist the driver and is not a substitute for safe and attentive driving practices. System effectiveness is dependent on many factors including road, weather and traffic conditions. See *Owner's Manual* for additional limitations and details. 36. Lane Departure Alert is designed to read visible lane markers under certain conditions, and provide visual and audible alerts when lane departure is detected. It is not a collision-avoidance system or a substitute for safe and attentive driving. Effectiveness is dependent on many factors including road, weather and vehicle conditions. See *Owner's Manual* for additional limitations and details. 37. Automatic High Beams operate at speeds above 25 mph. Factors such as a dirty windshield, weather, lighting and terrain limit effectiveness, requiring the driver to manually operate the high beams. See *Owner's Manual* for additional limitations and details. 38. The backup camera does not provide a comprehensive view of the rear area of the vehicle and you should also look around the vehicle, using mirrors to confirm rearward clearance. Environmental conditions may limit effectiveness and view may become obscured. See *Owner's Manual* for additional limitations and details. 39. The Tire Pressure Monitor System alerts the driver when tire pressure is critically low. For optimal tire wear and performance, tire pressure should be checked regularly with a gauge; do not rely solely on the monitor system. See *Owner's Manual* for additional limitations and details. 40. The Safety Connect® trial period is at no extra cost and begins on the original date of purchase or lease of a new vehicle. Paid subscription required after trial to access the service. 41. The Wi-Fi Connect trial begins at the time of activation and expires when 2GB of data is used or when the 3-month period ends. After the trial period expires, enrollment in a paid subscription is required to access the service. Terms and conditions apply. 42. The Bluetooth® word mark and logos are registered trademarks owned by Bluetooth SIG, Inc., and any use of such marks by Toyota is under license. A compatible Bluetooth®-enabled phone must first be paired. Phone performance depends on software, coverage and carrier. 43. May not be compatible with all mobile phones, MP3/WMA players and like models. 44. Rear parking assist sonar is designed to warn drivers of potential rear collisions at speeds of 6 mph or less. Certain vehicle and environmental factors, including an object's shape and composition, may affect the ability of the rear parking assist sonar to detect it. Always look around outside the vehicle and use mirrors to confirm clearance. See *Owner's Manual* for additional limitations and details. 45. Dynamic Navigation depends on an operative telematics device, a cellular connection, navigation map data and GPS signal strength, and other factors outside of Toyota's control, which can limit system functionality or availability. Services not available in every city or roadway. Use common sense when relying on information provided. Service may vary by vehicle and region. Registration is required. Terms of Use apply. See *Owner's Manual* and https://www.toyota.com/connected-services for additional limitations and details. To learn about Toyota's data collection, use, sharing and retention practices, please visit <https://www.toyota.com/privacycts/>. 46. The Dynamic Navigation three-year trial period begins on the original date of purchase or lease of a new vehicle. After the trial period expires, enrollment in paid subscription is required to access the service. 47. The Destination Assist trial period is at no extra cost and begins on the original date of purchase or lease

DISCLOSURES

of a new vehicle. After the trial period expires, enrollment in a paid subscription is required to access the service. **48.** Do not rely exclusively on the Blind Spot Monitor. Always look over your shoulder and use your turn signal. There are limitations to the function, detection and range of the monitor. See *Owner's Manual* for additional limitations and details. **49.** Do not rely exclusively on the Rear Cross-Traffic Alert system. Always look over your shoulder and use your mirrors to confirm rear clearance. There are limitations to the function, detection and range of the system. See *Owner's Manual* for additional limitations and details. **50.** This floor mat/floor liner was designed specifically for use in your model and model year vehicle and SHOULD NOT be used in any other vehicle. To avoid potential interference with pedal operation, each mat/liner must be secured with its fasteners. Do not install a floor mat/floor liner on top of an existing floor mat/floor liner. **51.** The Smart Key System may interfere with some pacemakers or cardiac defibrillators. If you have one of these medical devices, please talk to your doctor to see if you should deactivate this system. **52.** The Toyota Remote Connect trial period is at no extra cost and begins on the original date of purchase or lease of a new vehicle. Paid subscription required after trial to access the service. Terms of Use apply. **53.** The Service Connect trial period is at no extra cost and begins on the original date of purchase or lease of a new vehicle. After the respective trial period expires, enrollment in paid subscription is required to access the service. **54.** HomeLink® and the HomeLink® house icon are registered trademarks of Gentex Corporation. **55.** Extra-cost color. **56.** Toyota strives to build vehicles to match customer interest and thus they typically are built with popular options and option packages. Not all options/packages are available separately and some may not be available in all regions of the country. If you would prefer a vehicle with no or different options, contact your dealer to check for current availability or the possibility of placing a special order. Color(s) depicted may vary based on multiple factors, including ambient lighting and the format in which it is being viewed (e.g., computer, mobile device or print). **57.** Advanced voice recognition capabilities vary by head unit. **58.** HD Radio™ Technology manufactured under license from iBiquity Digital Corporation U.S. and Foreign Patents. HD Radio™ and the HD, HD Radio, and "Arc" logos are proprietary trademarks of iBiquity Digital Corp. **59.** Dynamic voice recognition capabilities vary by head unit. **60.** Sway Warning is designed to provide a visual and audible alert if it detects a pattern of vehicle movement that might indicate driver inattention or drowsiness. It is not a collision-avoidance system or a substitute for safe and attentive driving. Effectiveness is dependent on many factors including road, weather and vehicle conditions. See *Owner's Manual* for additional limitations and details. **61.** Vehicle Stability Control is an electronic system designed to help the driver maintain vehicle control under adverse conditions. It is not a substitute for safe and attentive driving practices. Factors including speed, road conditions, weather and driver steering input can all affect whether VSC will be effective in preventing a loss of control. See *Owner's Manual* for additional limitations and details. **62.** Brake Assist is designed to help the driver take advantage of ABS and is not a substitute for safe driving practices. Braking effectiveness also depends on proper vehicle maintenance, tire and road conditions. See *Owner's Manual* for additional limitations and details. **63.** Smart Stop Technology® operates only in the event of certain contemporaneous brake and accelerator pedal applications. When engaged, the system will reduce power to help the brakes bring the vehicle to a stop. Factors including speed, road conditions and driver input can all impact stopping distance. Smart Stop Technology® is not a substitute for safe and attentive driving and does not guarantee instant stopping. See *Owner's Manual* for additional limitations and details. **64.** Airbag systems are Supplemental Restraint Systems and are designed to inflate only under certain conditions and in certain types of severe collisions. To decrease the risk of injury from an inflating airbag, always wear seatbelts and sit upright in the middle of the seat as far back as possible. Do not put objects in front of an airbag or around the seatback. Do not use a rearward-facing child seat in any front passenger seat. See *Owner's Manual* for additional limitations and details. **65.** Active front headrests can help reduce the extent of whiplash in certain types of rear-end collisions. **66.** The engine immobilizer is a state-of-the-art anti-theft system that is initiated when you insert your key into the ignition switch or bring a Smart Key fob into the vehicle. The engine will only start if the code in the transponder chip inside the key/fob matches the code in the vehicle's immobilizer. The transponder chip is embedded in the key/fob and can be costly to replace. If you lose a key or fob, your Toyota dealer can help or go to www.aloa.org to find a qualified locksmith in your area who can perform high-security key service. **67.** ToyotaCare covers normal factory scheduled maintenance for two years or 25,000 miles, whichever comes first. Certain models require a different maintenance schedule as described in their Maintenance Guide. 24-hour Roadside Assistance is also included for two years, unlimited mileage. Roadside Assistance does not include parts and fluids, except emergency fuel delivery. See Toyota dealer for details and exclusions. Valid only in the continental U.S. **68.** Auto LSD is an electronic, brake-actuated limited-slip differential that automatically activates when VSC is disengaged at low speeds. See *Owner's Manual* for additional limitations and details. **69.** EPA-estimated 20 city/23 hwy/21 combined mpg rating for 2021 Tacoma SR 4x2 4-Cyl. AT and SR5 4x2 4-Cyl. AT; 19 city/22 hwy/20 combined mpg rating for 2021 Tacoma SR 4x4 4-Cyl. AT and SR5 4x4 4-Cyl. AT; 19 city/24 hwy/21 combined mpg rating for 2021 Tacoma SR 4x2 V6 AT, SR5 4x2 V6 AT, TRD Sport 4x2 V6 AT, TRD Off-Road 4x2 V6 AT and Limited 4x2 V6 AT; 18 city/22 hwy/20 combined mpg rating for 2021 Tacoma SR 4x4 V6 AT, SR5 4x4 V6 AT, TRD Sport 4x4 V6 AT, TRD Off-Road 4x4 V6 AT, Limited 4x4 V6 AT and TRD Pro 4x4 V6 AT; 17 city/21 hwy/18 combined mpg rating for 2021 Tacoma TRD Sport 4x4 V6 MT; and 17 city/20 hwy/18 combined mpg rating for 2021 Tacoma TRD Off-Road 4x4 V6 MT and TRD Pro 4x4 V6 MT. Use for comparison purposes only. Your mileage will vary for many reasons, including your vehicle's condition and how/where you drive. See www.fueleconomy.gov.

Toyota strives to build vehicles to match customer interest and thus they typically are built with popular options and option packages. Not all options/packages are available separately and some may not be available in all regions of the country. See toyota.com for information about options/packages commonly available in your area. If you would prefer a vehicle without any or with different options, contact your dealer to check for current availability or the possibility of placing a special order.

Color(s) depicted may vary based on multiple factors, including ambient lighting and the format in which it is being viewed (e.g., computer, mobile device or print).

Some vehicles are shown with available equipment. Seatbelts should be worn at all times. For details on vehicle specifications, standard features and available equipment in your area, contact your Toyota dealer. A vehicle with particular equipment may not be available at the dealership. Ask your Toyota dealer to help locate a specifically equipped vehicle.

Toyota Tacoma is designed to meet most off-road driving requirements. Abusive use may result in bodily harm or damage. Toyota encourages responsible operation to protect you, your vehicle and the environment. Seatbelts should be worn at all times. Please do not allow passengers to ride in the cargo area. Towing hitch receiver/ball mount kits are not intended to provide crash protection. For details on vehicle specifications, standard features and available equipment in your area, contact your Toyota dealer. A vehicle with particular equipment may not be available at the dealership. Ask your Toyota dealer to help locate a specifically equipped vehicle.

All information presented herein is based on data available at the time of posting, is subject to change without notice and pertains specifically to mainland U.S.A. vehicles only. Vehicles shown may be prototypes, shown using visual effects and/or shown with options. Actual models may vary.



For Toyota Mobility program details, go to www.toyota.com/mobility or call the Toyota Brand Engagement Center at 1-800-331-4331

**GUAM HOUSING AND URBAN RENEWAL AUTHORITY
ATURIDAT GINIMA YAN RINUEBAN SIUDAT**

MEMORANDUM

TO: Board of Commissioners

FROM: Ray Topasna, Executive Director

**SUBJECT: Intent of Award for IFB#GHURA-COCC-021-008
Trash and Cardboard Collection Services**

GHURA issued an Invitation for Bid for a service contract for trash and cardboard collection services on July 22, 2021. A total of 2 vendors had expressed their interest in the bid. The IFB closed on August 20, 2021 and 2 companies submitted bids. Below are the results of the bid submissions:

	Bid Item #1	Bid Item #2	Total
Lagu Sanitation	\$41,664.00	\$1,008.00	\$42,672.00
Pacific Waste Systems	\$55,648.80	\$4,131.84	\$59,780.64

Bid Item #1: Pick-up and disposal of trash collection

- AMP 1: 1 bin; 1 pick-up per week
- AMP 2: 2 bins; 1 pick-up per week
- AMP 3: 4 bins; 1 pick-up per week
- AMP 4: 2 bins; 1 pick-up per week
- Guma Trankilidat: 3 bins; 2 pick-ups per week
- Main Office: 1 bin; 1 pick-up per week

Bid Item #2: Pick-up and disposal of cardboard collection

- AMP 1: 1 bin; pick-up per week
- AMP 4: 1 bin; pick-up per week
- Guma Trankilidat: 1 bin; pick-up per week
- Main Office: 1 bin; 1 pick-up per week

Upon Procurement's review of the bid submissions, all vendors were responsive and met the IFB specifications. GHURA is requesting for the Board of Commissioners approval for an award to Lagu Sanitation as the lowest, responsive, responsible bidder for a total annual amount of Forty-Two Thousand Six Hundred Seventy-Two dollars and Zero Cents (\$42,672.00). The contract term is for three (3) years with the option to extend for two (2) additional one (1) year terms.

Attachment: Bid Tabulation

At the Regular Board Meeting of September 10, 2021, a motion was made by Commissioner Delia and seconded by Resident Commissioner Corpus to approve the award of IFB#GHURA-COCC-021-008 for Trash and Cardboard Collection Services to Lagu Sanitation in the amount of \$42,672.00. Without any further discussion and objection, the motion was approved.

IFB#GHURA-COCC-021-008

Ray S. Topasna, Executive Director

Trash and Cardboard Collection Services

Bid due date: August 20, 2021

Bid due time: 2:00 PM

Package no.	1	2	3	4
Name of Bidder	LAGU SANITATION	PWS		
Base Bid item 1	\$3,472.00	\$4,637.40		
Base Bid item 2	\$84.00	\$344.32		
Bid Bond 15%	✓	\$27,000.00		
Bonding Company	DB INSURANCE	CHUNG KAO INSURANCE		
Current Business License	✓	✓		
AG Form 2, 3, 4, 5, 6, 7	✓	✓		
HUD Form 5369-C	✓	✓		
Disclosure of Organizational COI Affidavit	✓	✓		
Contact for Contract Administration	✓	✓		
Brochures & Descriptive Literature	✓	✓		
Addendum 1	✓	✓		
Addendum 2	✓	✓		

ATTESTED BY: Nana N. Nandisa
Andry Palmaro

Date: 08.20.2021
8/20/2021



GHURA A/E

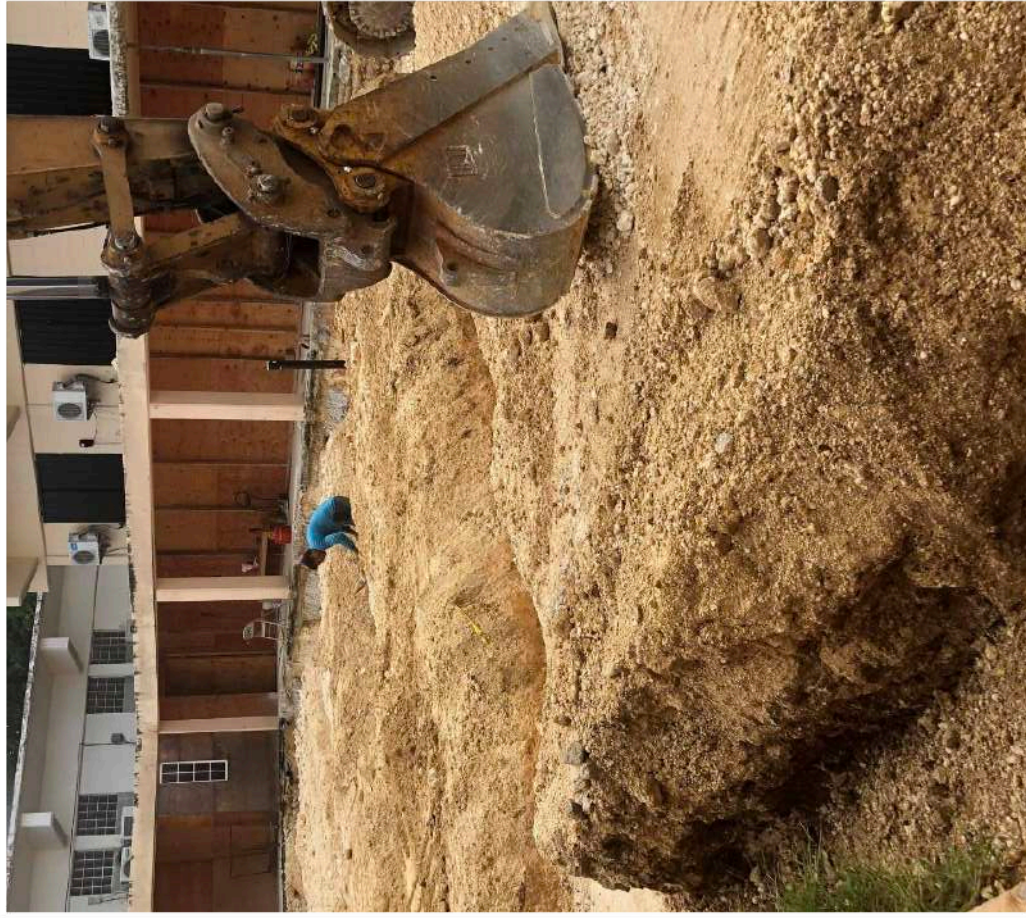
BOC REPORT

September 10, 2021

CDBG Fund

Projects / KPI	Sinajana Central Arts Hall	Resident Treatment Women's	Umatac/ Sinajana Baseball Field	Inarajan Basketball Court	MTM Community Center	Sinajana Fire Station	I-Learn Academy
Budget (\$)	892,655	2,350,000	1,056,979	369,742	464,567	1,663,490	12M
Contract/Actual	~55%	0/0	1,056,979 / 806,979	0/0	0/0	0/0	2nd payment
Status	Roof beam pour 3rd week, cure, double-fee install	Mobilize crew+assets 9/15	Work Continues	Clearing and Grading	Specs ready for advertisement	A/E Negotiations	Work continues
Risks / Issues	Completion 2/2022	NTP Issued	Schedule Extension & Funding	Reviewing Schedule of Values and Labor Docs	Enviro Report Pending	GFD inquiries	
Quality	-	-	Compliant to Code	-	-	-	-

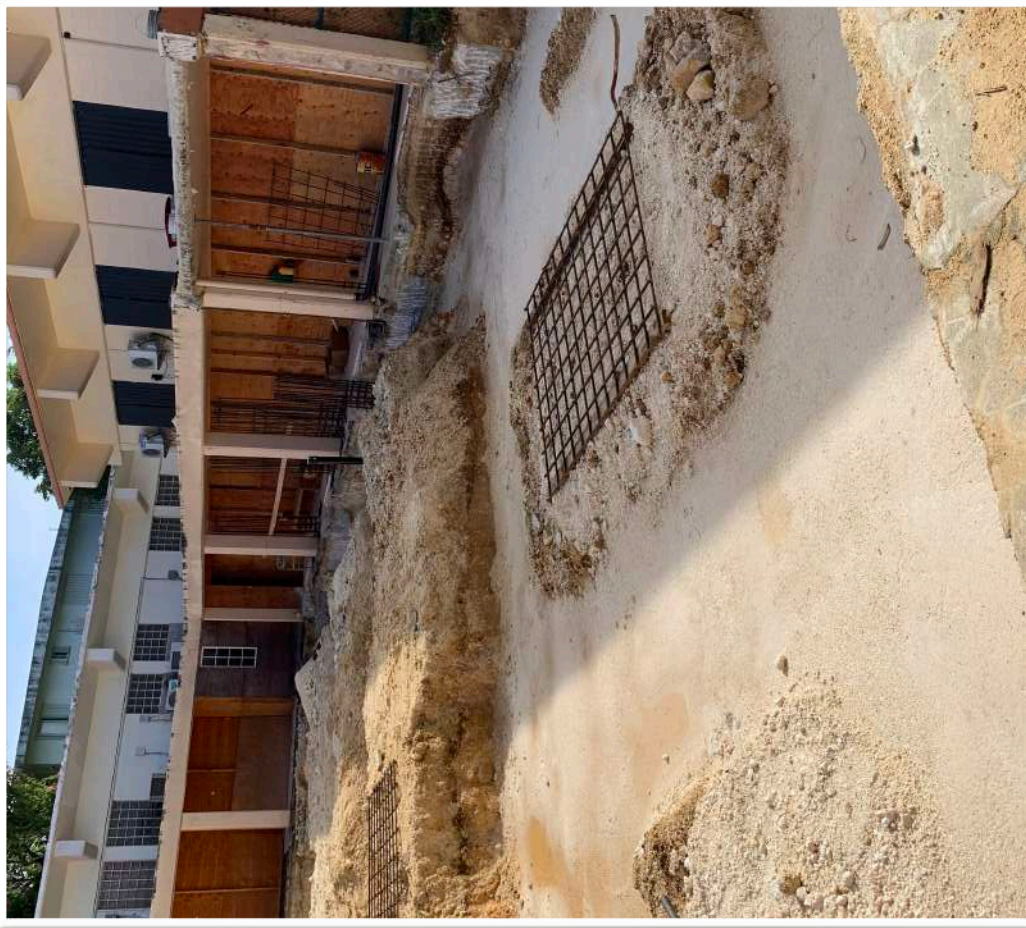
KPI: Key Performance Indicators



November 2020

Sinajana Arts Center

December 2020





September 2021

Sinajana Arts Center



September 2021



November 2020



December 2020

Umatac Baseball Field



September 2021

Umatac Baseball Field

September 2021



Sinajana Fire Station



REQUEST FOR PROPOSALS

Architectural/Engineering Design and Programming

Sinajana Dipattamenton Guåfi

Sinajana Fire Station

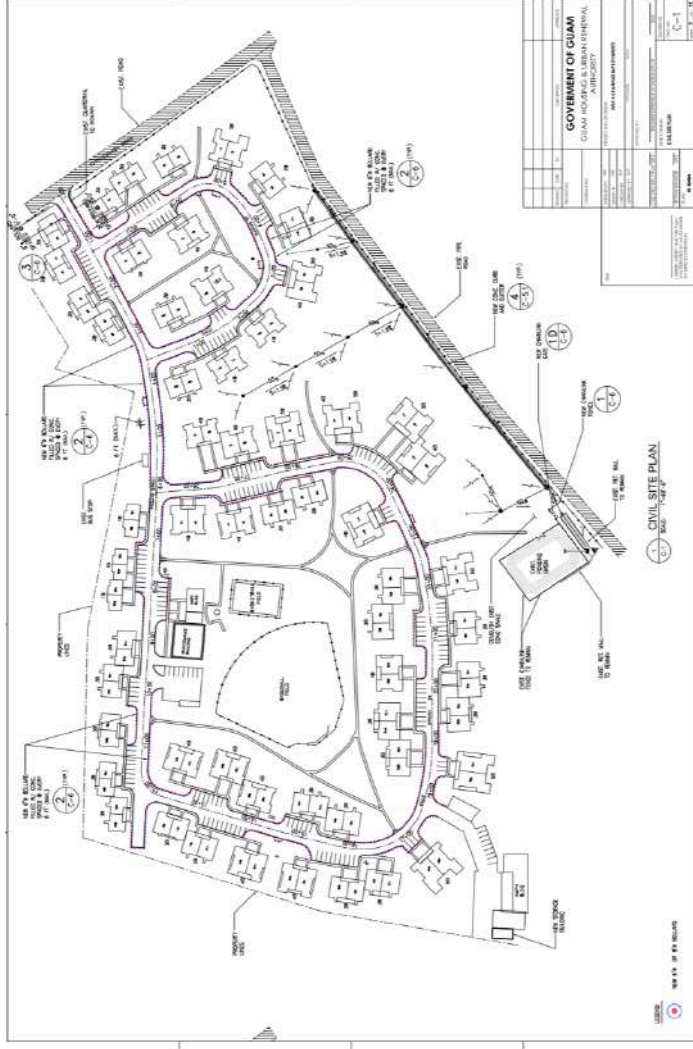


ED/A-E Initiatives

Projects / KPI	AMP Reserves	Solar PPA @GT	Repositioning	Mosquito Lab
GovGuam Agency				DPHSS
	Budget Approved: A/E review projects and schedules	Contract under legal review	Under A/E Planning	Possible legal matters: Jan 2022
	Spend down operating reserves	Long term agreement		For Discussion
Risks / Issues				
Quality	-	-	-	-

AMP-4 IMPROVEMENTS

GUAM HOUSING & URBAN
RENEWAL AUTHORITY
MAITE, TOTO, GUAM



Site Improvements	Toto Gardens	GH 35	GH48
Bollards	353,000	248,000	265,000
Storage Area	150,000		
BBall Hat Installation	800,000		
Drainage Correction	800,000		



RENOVATIONS AND CIPS

- Awarded Bids:
 - Eight Units (8) Guma Trankilidat
 - Eleven Units (11) Various AMPs
- Public Bids:
 - Processing Additional Requests (8 units)
 - Door Replacements @ GHURA 100
 - Lead Based Paint Abatement (April 30)
- Ongoing MODS: (30+ active units)
- A/E Processing Five Properties for Affordable Homes Construction Projects
- Upcoming AMP Projects:
 - New Community Centers – AMP 1
 - Environmental Controls – AMP 4

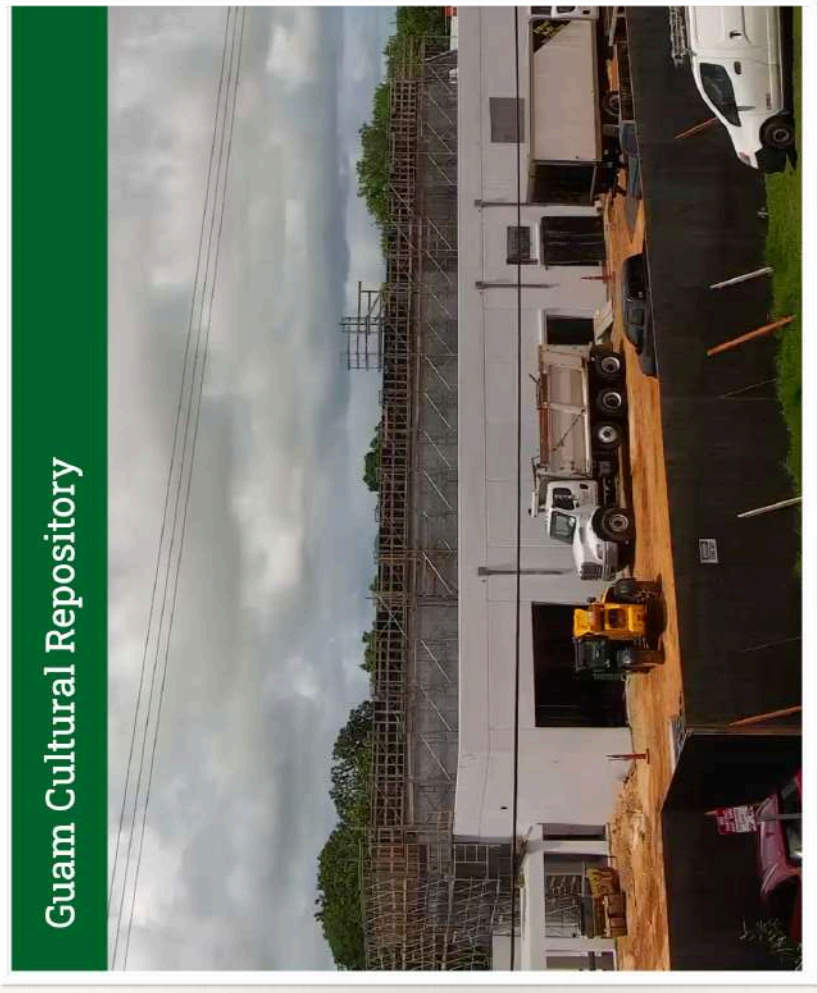
Challenges: COVID-19 & Military Buildup

- ❖ **COVID-19 Effects on GovGuam: 2020 (days)**
 - ❖ Fully operational: 51
 - ❖ Operating at 25% Capacity Limit: 194 (PCOR1)
 - ❖ Operating at 50% Capacity Limit: 71 (PCOR2)
 - ❖ Sept/Nov - Full Construction Shutdown
- ❖ **GovGuam 2021 (days)**
 - ❖ Operating at 25% Capacity Limit: 18 (PCOR1)
 - ❖ Operating at 50% Capacity Limit: 34 (PCOR2)
 - ❖ Fully operational with Social Distancing: 191 days (PCOR3)



Challenges: COVID-19 & Military Buildup

- ❖ **Military BuildUp - Did not stop**
- ❖ H2B workforce housing - short 2000 beds
 - ❖ 6000 H2Bs in 2years (2023 peak)
- ❖ Seeking housing at R2 / C zoned properties
- ❖ Average sale price homes: 35% increase
- ❖ Local contractor workforce absorbed by military contractors
- ❖ Higher wages, paid promptly
- ❖ Challenge locating quality contractors with “outside the fence” projects





Boris Hertslet's post

The construction of Camp Blaz will be booming in the next couple of years.

Here are some larger projects awarded in FY21:

- 1/6 - Admin Building - \$54M
- 3/15 - Fuel Station - \$24M
- 3/22 - Distribution Warehouse - \$75M
- 5/10 - Medical/Dental Clinic - \$45M
- 8/5 - Bachelor Enlisted Quarters - \$546M
- 8/5 - Fire Station - \$33M
- 8/13 - Combat Training Facility - \$8M
- 8/17 - Bachelor Office Quarters - \$98M
- 8/18 - High-Bay Warehouse - \$36M

If you want to get involved in Federal contracting, visit our website (www.guamptac.com) to see how we can assist!

https://lnkd.in/d_aBWHem



4



0



Like



Comment



Share



Send

\$919M - Award 2021

Awarded	Company	Amount	Project
8-Oct	McKean Defense Group LLC	\$ 244,572	IDIQ Engineering Support for Network/Communications Systems
14-Oct	CAPE Environmental Management Inc	\$ 3,600,000	IDIQ Mod for Environmental Remediation Services
24-Nov	Pacific Federal Management Inc	\$ 10,366,798	Exercise Option Year 1 for Ground Maint/Tree Trimming Services
29-Dec	APTIM Federal Services LLC	\$ 9,026,910	Maint/Repair of Petroleum Systems
30-Dec	McKean Defense Group LLC	\$ 1,151,296	IDIQ Mod for Engineering Support for Network/Comm Systems
30-Dec	United Support Services Inc	\$ 756,938	1st year of 5-year Berthing/Messing Barge Maintenance Support
4-Jan	H2O Guam JV	\$ 97,995,000	Repair/Modernize Lima Wharf Apra Harbor
6-Jan	Hensel Phelps-Shimizu Joint Venture	\$ 53,998,237	Construct Base Admin Bldg Marine Corps Base Guam
19-Jan	Sundance-EA Associates II	\$ 1,447,016	1st year of 5-year IDIQ for Environmental Compliance Services
21-Jan	Conflict Kinetics Corp	\$ 225,316	1st year of 5-year IDIQ for Small Arms Support Services
25-Feb	Granite-Obayashi JV	\$ 41,944,700	Construct Standoff Weapons Complex
15-Mar	Hensel Phelps Construction Co	\$ 24,500,000	Design/Construct Fuel Station Marine Corps Base Guam
17-Mar	Core Tech-HDCC-Kajima LLC	\$ 15,717,985	Construct Ordnance Admin/Ops Center
22-Mar	Core Tech-HDCC-Kajima LLC	\$ 75,586,438	Design/Construct Distribution Warehouse Marine Corps Base Guam
1-Apr	Hamilton Sundstrand Corp	\$ 83,233	IDIQ R&D for Central Atmosphere Monitoring System
13-Apr	ManTech SRS Technologies Inc	\$ 15,000,000	IDIQ AE for Range Sustainability Services
15-Apr	AECOM Technical Services Inc	\$ 20,000,000	IDIQ Mod AE Services for LT Environmental Action
21-Apr	Hensel Phelps Construction Co	\$ 25,004,000	Big DB MACC TO - Design/Construct Explosive Ord. Disp. Compound
10-May	Core Tech-HDCC-Kajima LLC	\$ 45,000,000	Construct Medical/Dental Clinic Marine Corps Base Guam
19-May	Garcia & Assoc., Inc. Archeology, Pac Consulting Serv.	\$ 6,860,000	1st year of 5-year IDIQ for Cultural Resource Mgmt Services
2-Jul	Pacific Rim Constructors Inc	\$ 11,458,714	SB DB MACC TO - Build Solar Array
26-Jul	DZSP 21 LLC	\$ 80,551,613	Exercise Option Year 1 for BOS Services
5-Aug	Core Tech-HDCC-Kajima LLC	\$ 546,082,800	Construct Bachelor Enlisted Quarters Marine Corps Base Guam
		\$ 1,086,601,566	Total FY21 (Guam portion of contract)

Source: USAspending.gov



GHURA A/E

BOC REPORT - Questions

September 10, 2021